



Ein cyf/Our ref MA/P/LG/2719/18 Doc 3

Mike Hedges AM
Chair
Climate Change, Environment & Rural Affairs Committee
National Assembly for Wales
Cardiff
CF99 1NA

06 September 2018

Dear Mike,

Marine Protected Area Network Management Framework for Wales 2018-2023 and Action Plan 2018-2019

In your letter to me dated 03 October 2017 regarding the Climate Change, Environment and Rural Affairs Committee's report on Marine Protected Area (MPA) management, you requested a copy of the MPA Management Priority Action Plan being drafted in response to Recommendation 1 of the report. Since we were last in correspondence about the Plan it has developed substantially with the input of the Marine Protected Area Management Steering Group. The Steering Group, which is made up of stakeholders representing the main management authorities in Wales, has produced an MPA Network Management Framework for Wales 2018-2023 and an MPA Network Management Action Plan for Wales 2018-2019. The Framework and Action Plan has been developed to

- move towards a joined-up and consistent approach to MPA management across the whole network;
- provide strategic direction and set out the priority MPA network management actions expected to maintain and or improve condition; and
- encourage management authorities to make the best use of the resources available to them.

The Framework is set out over five sections and three annexes. It is intended to give as comprehensive a picture as possible of the current MPA network in Wales, how it is

Bae Caerdydd • Cardiff Bay
Caerdydd • Cardiff
CF99 1NA

Canolfan Cyswllt Cyntaf / First Point of Contact Centre:
0300 0604400

Gohebiaeth.Lesley.Griffiths@llyw.cymru
Correspondence.Lesley.Griffiths@gov.wales

Rydym yn croesawu derbyn gohebiaeth yn Gymraeg. Byddwn yn ateb gohebiaeth a dderbynnir yn Gymraeg yn Gymraeg ac ni fydd gohebu yn Gymraeg yn arwain at oedi.

We welcome receiving correspondence in Welsh. Any correspondence received in Welsh will be answered in Welsh and corresponding in Welsh will not lead to a delay in responding.

managed and how we intend to improve its management and ultimately its condition. The Action Plan will provide a focus for management authorities on actions which can lead to further improvements in the management, and hence condition, of the network of MPAs in Wales. I have also committed the additional funding I announced for MPA management to support delivery of the actions in the 2018-19 Action Plan. I enclose copies of the Framework and Action Plan, both of which will be published shortly on the Welsh Government's website.

A handwritten signature in black ink that reads "Lesley Griffiths". The signature is written in a cursive style with a large, sweeping 'L' and a long, trailing 's'.

Lesley Griffiths AC/AM

Ysgrifennydd y Cabinet dros Ynni, Cynllunio a Materion Gwledig
Cabinet Secretary for Energy, Planning and Rural Affairs



Llywodraeth Cymru
Welsh Government

Marine Protected Area Network Management Framework for Wales

2018–2023





Llywodraeth Cymru
Welsh Government

Marine Protected Area Network Management Action Plan for Wales

2018–2019



Overview

For the first time, the MPA Network Management Action Plan for Wales 2018-19 brings together in one place the priority network level actions identified by the MPA Management Steering Group which work to maintain and improve the management and condition of the network of MPAs across Wales. It includes ongoing management actions plus new actions identified to improve the management and condition of the network.

The MPA Network Management Action Plan complements management activity delivered at a local level and identified within individual site action plans where they exist [please see Annex 2 of the MPA Network Management Framework for Wales 2018-2023 for details of these]. This Action Plan is focused on improving management at our existing network of sites; other workstreams are taking forward work to complete the network of MPAs.

The MPA Network Management Action Plan works toward the long-term vision for the management of the MPA network in Wales where:

The Welsh MPA network is under effective and consistent management which safeguards the marine wildlife and habitats of sites, and leads to site features achieving or maintaining favourable condition. Network management supports resilient marine ecosystems which in turn help to achieve clean, safe, healthy, sustainable, productive and biologically diverse Welsh seas. MPAs are valued for the long-term benefits they provide to the people of Wales through the protection of their rich natural and cultural heritage.

Each action contributes to at least one of the five management principles:

1. **Strategic Planning:** Management should be guided by strategic planning processes at both a sectoral and all-Wales level. It supports sustainable use of the MPA network in ways which conserve and enhance condition, support resilience of marine ecosystems, support wellbeing and deliver sustainable management of natural resources.
2. **Regulation, development consenting and assessment processes:** Regulatory processes and consenting decisions should be delivered consistently and proportionately across the network, and proactively consider and support the maintenance or enhancement (where possible / appropriate) of the condition of relevant sites and features across the network.
3. **Management advice and guidance:** Decision-making and management operations should be supported by clear and consistent advice and guidance on MPAs including their conservation objectives.
4. **Understanding the condition of, and pressures and threats on, sites and their features to inform management:** management should be informed by, and consistently refer to, formal assessment and reporting on the health and condition of features, sites and the network as a whole. Assessment and reporting is informed by a prioritised monitoring programme that improves understanding of condition, change and impacts across aspects of the network where key pressures are identified.
5. **Wider management:** management operations on individual and multiple sites should be prioritised to ensure delivery of activity that has the potential for greatest improvement in the management of key pressures, and on condition across the network. Management activities may maintain or enhance feature condition, identify and address particular local issues and pressures, and raise awareness of MPAs through targeted interventions and engagement with members of the public.

The actions

Actions were submitted by Steering Group members for assessment against a set of agreed prioritisation criteria, which are set out in **Annex 2**. Working with the Steering Group's European Marine Site Officer (EMSO) advisor, we also invited other EMSOs to submit actions to be assessed for inclusion in the first Network Management Action Plan.

Following the assessment the Steering Group has agreed a list of 21 priority actions. Many of the actions in this first iteration of the Action Plan are investigatory in nature. It is anticipated that these investigatory actions will result in the development of active interventions suitable for inclusion in future iterations of the Action Plan.

The actions reflect the breadth of MPA management which takes place day in day out as well as specific interventions and projects.

Annex 1 contains proposed actions which Steering Group members assessed as being important but more suitable for delivery at a local rather than network level. Local delivery officers will provide an update on these projects, and any other local actions being delivered with relevance to the network, as part of the annual reporting process for this Action Plan (Action 20 refers).

	Action	Description	MPA Network Management Outcome(s)	Timescale for delivery	Key Management Authorities	Resource secured: Y/N?
1	Develop an approach to undertaking improved and periodic MPA condition assessments.	Develop indicators and a process for reporting on condition of features protected within the network of MPAs in Wales.	Timely assessment and reporting on the condition of the features of our network will better inform management and focus priorities.	Stage 1: August 2018 Stage 2: December 2018 Stage 3: December 2018 – February 2021	NRW	Y for Stages 1 & 2; Stage 3 EMFF bid awaiting decision.
2	Deliver MPA management through regulatory consenting processes.	Regulatory decisions take account of impacts on MPAs and are in accordance with WNMP policies (once published), including in relation to condition and management of the MPA network.	Decision making that reduces impact on the features of our MPA network.	Continual	All management authorities	Y

	Action	Description	MPA Network Management Outcome(s)	Timescale for delivery	Key Management Authorities	Resource secured: Y/N?
3	Improve accessibility of marine monitoring data.	Compile and enter marine monitoring data into a suitable database (Marine Recorder) to increase accessibility of marine monitoring data. The project will focus on all sediment monitoring data since 2014, all WFD sediment data since 2007 and all reef data since 2010.	This will inform assessments of MPAs and allows the information to be used by others in projects / research, improving the overall marine evidence base.	October 2018 – March 2019	NRW	Y
4	Further develop and deliver a risk based marine monitoring programme across the MPA network.	Develop a prioritised, risk-based marine biodiversity monitoring programme across the MPA network which will be delivered using the most efficient and effective techniques available. Results and analyses will be published and used to inform management. Whilst the new programme is being developed, the current monitoring programme will continue to be delivered.	This will inform future assessments of MPA condition and improve the overall marine evidence base. The evidence will also inform the development of appropriate management measures and in the long-term help understand their effectiveness.	Ongoing delivery of risk based monitoring programme; implementation of new integrated marine biodiversity monitoring programme from April 2019 onwards.	NRW JNCC WG	Y
5	Develop an approach for refining conservation objectives for all MPAs in Wales while continuing to publish guidance for new sites as necessary.	Develop an approach to providing more targeted conservation advice for our MPA features in Welsh waters, while making sure that existing sites have published conservation objectives which will be integrated into the new approach when developed.	Decision-making and management will be supported by clear and consistent advice and guidance on MPAs including their conservation objectives.	Publish conservation advice for sites as needed. Initial contract to develop the approach on targeted conservation objectives September 2018 – March 2019.	NRW JNCC	Y

	Action	Description	MPA Network Management Outcome(s)	Timescale for delivery	Key Management Authorities	Resource secured: Y/N?
6	Develop a UK Dolphin and Harbour Porpoise Conservation Strategy.	Develop a consistent, UK-wide approach to managing pressures and threats on eight of the most commonly-found dolphin and porpoise species in UK waters within and outside MPAs.	Consultation on draft Strategy Publication and implementation of Strategy.	Consultation December 2018 Publication Summer 2019	WG JNCC NRW	Y
7	Undertake analysis of outstanding monitoring data samples to inform site condition assessment.	Complete analysis of outstanding data samples to improve accuracy and confidence in condition assessments.	Good, timely knowledge of the condition of features will help prioritise management action.	October 2018 – March 2019	NRW	Y
8	Assess and where necessary manage the impact of commercial fishing activities on MPAs.	Continue to deliver the Assessing Welsh Fishing Activities Project. The scope of the work currently focuses on Welsh waters to 12 nautical miles and considers impacts on benthic habitats in MPAs as well as mobile species features e.g. fish, birds and marine mammals.	Will improve the evidence base on the pressures / threats from all relevant commercial fishing activities on condition of the features across the network. This will be used to inform where management is needed.	Assessments completed 2020; management measures ongoing.	WG NRW	Y
9	Operate a risk based approach to fisheries enforcement.	Implement a risk-based and intelligence-led approach to marine enforcement, using technological improvements to maintain a focus on high-risk fisheries activities.	This action is key to the regulation of fisheries in Welsh waters.	Continual	WG	Y

	Action	Description	MPA Network Management Outcome(s)	Timescale for delivery	Key Management Authorities	Resource secured: Y/N?
10	MPA Network Condition Improvement Project.	Expand the remit of the existing MPA Condition Improvement Project to incorporate, and update where necessary, the pressures and threats for the complete network of MPAs in Wales, including recently designated sites. Reprioritise priority work areas and focus going forward.	Revised project scope will focus on the identifying the pressures and threats that are (or could) significantly affect the condition of the features. The project will actively seek to address common management challenges across the network scale.	July 2018 – Apr 2019	NRW	Y
11	Improve maps of the extent and distribution of Annex I marine habitats.	Key evidence to support management of SACs (e.g. casework advice) and Article 17 reporting. Mainly involves collation of third party data (e.g. UKHO multibeam data) to update maps.	Improved maps will support management as well as assessment and reporting.	Continual (as new data becomes available).	NRW	Y

	Action	Description	MPA Network Management Outcome(s)	Timescale for delivery	Key Management Authorities	Resource secured: Y/N?
12	Deliver phase 2 of the unregulated activities project, focussed on the priority activities.	Project focussed on the unregulated activities of greatest concern at the network scale. The project will develop the evidence base on the spatial and temporal distribution, intensity and impacts of these activities on features protected in the network. We will work with appropriate stakeholders to identify and implement feasible and effective management interventions (e.g. regulation, financial incentives, behavioural change, etc.), where required, to mitigate impacts.	The project will increase our evidence base for high priority activities. This will allow the prioritisation and implementation of management (if needed).	September 2018 – April 2019	NRW	Y

	Action	Description	MPA Network Management Outcome(s)	Timescale for delivery	Key Management Authorities	Resource secured: Y/N?
13	Deliver the priority actions within the Marine Litter Action Plan where they provide benefit to the network of MPAs in Wales.	<p>The priority actions for delivery are:</p> <ul style="list-style-type: none"> • A strong evidence base – build an understanding of what works, recognising that different types of litter requires different solutions, to inform the action plan. • Focus on preventative action to prevent the problem at source as core strategy. • Involvement of communities of place, communities of interest and users of the marine environment to develop and implement solutions. • Integrated working to maximise economic, social and environmental outcomes. • Monitor the impact of interventions in achieving long term change. 	Will improve understanding of this issue on MPAs in Wales.	March 2021	<p>The Clean Seas Partnership:</p> <p>WG</p> <p>NRW</p> <p>DCWW</p> <p>MHPA</p> <p>LAs</p> <p>RAG officers</p>	Y

	Action	Description	MPA Network Management Outcome(s)	Timescale for delivery	Key Management Authorities	Resource secured: Y/N?
14	Collate and analyse evidence to inform reporting requirements which meet national and international obligations, including under Section 124 of the Marine and Coastal Access Act (2009) and to OSPAR on effective management of MPAs.	<p>Update the 2016 assessment on management effectiveness to include new information and feed Welsh level information into the UK report to OSPAR.</p> <p>Compile report under section 124 of the Marine Act on the extent to which an ecologically coherent network of MPAs in Welsh waters has been achieved and is being managed effectively.</p>	Improved accessible information on the state of the MPA network.	Section 124 report laid before the NAFW and published on WG website – December 2018 Management effectiveness report submitted to OSPAR – October 2018.	WG NRW JNCC	Y
15	Explore how outcomes from pilot projects on diffuse and atmospheric pollution at Pen Llŷn a'r Sarnau, Pembrokeshire Marine and Severn Estuary SACs can be applied across the network.	Use learning from site level projects to explore the need to develop a network scale project / action addressing water pollution effects on the features of the MPA network.	Improved water quality across the network.	Interim results to be reviewed by MPAMSG June 2019.	NRW Relevant Authority Groups	Y

	Action	Description	MPA Network Management Outcome(s)	Timescale for delivery	Key Management Authorities	Resource secured: Y/N?
16	Sustainable Management of Marine Natural Resources Project. The Welsh Government has been awarded European Maritime and Fisheries Funding to deliver this project which will support the implementation of the first Welsh National Marine Plan.	To develop, and improve access to, the environmental evidence base to help identify opportunities and constraints in relation to potential future development of the wave and tidal stream energy and aquaculture sectors in Welsh waters. It will aim to create locational guidance and other tools to allow the consideration of environmental sensitivities and help to ensure compliance with the environmental policies in the draft WNMP.	Local guidance and other tools will allow developers, decision makers and other stakeholders to better understand the environmental sensitivities within areas of potential future use for the wave and tidal stream and aquaculture sectors leading to better outcomes for the environment and contributing towards the sustainable development of these sectors.	Work Package 1 (Collation and QA of existing data and information) to be delivered by January 2019. Work Package 2 (Improved access to relevant data and information and production of locational guidance and decision making tools) to be delivered by December 2020.	WG NRW	Y

	Action	Description	MPA Network Management Outcome(s)	Timescale for delivery	Key Management Authorities	Resource secured: Y/N?
17	Develop a bio-security plan for marine invasive non-natives species (INNS) learning from existing projects.	<p>Pilot project at Pen Llŷn a'r Sarnau SAC to inform development and implementation of biosecurity planning across the MPA. It will:</p> <ul style="list-style-type: none"> • Work with stakeholders to address the main pathways of introduction and spread of marine INNS. • Develop techniques to assess and predict the effects of INNS on habitats and species. • Build capacity to protect marine biodiversity and minimise risks to protected features. • Learn from The Rapid LIFE project particularly the pilot work done on the Severn. 	The main outcome of the project will be the protection of the features of the site by managing the key pathways by which marine INNS are introduced and spread at the site level through the use of good biosecurity.	<p>Preparatory action: August 2018 – March 2019</p> <p>EMFF project: April 2019 – March 2022</p>	NRW PLAS RAG	Y for preparatory action; EMFF bid awaiting decision.
18	<p>Develop consistent and proportionate guidance to:</p> <ol style="list-style-type: none"> improve casework advice, and to support implementation of the Welsh National Marine Plan. 	To support a consistent and proportionate assessment of the impacts of regulated activities on the protected features of MPAs in the Welsh marine area. Guidance to support implementation of Welsh National Marine Plan policies in decision making e.g. marine licencing and policy specific guidance.	Consistent and proportionate guidance will support improved decision making which will help to improve the security of management and help to maintain the condition, and where appropriate, improve the features of our MPAs.	Ongoing programme of relevant guidance production.	NRW JNCC	Y

	Action	Description	MPA Network Management Outcome(s)	Timescale for delivery	Key Management Authorities	Resource secured: Y/N?
19	Addressing coastal squeeze impacts on MPAs.	A review to understand the nature and scale of coastal squeeze on MPA coastal habitat features. Continue to progress habitat creation projects to provide compensatory coastal habitat for anticipated habitat loss arising from work associated with flood and coastal erosion risk management schemes.	Compensation for loss of some coastal habitats due to climate change and increased knowledge of what the impacts may be.	Evidence action: September 2018 – end March 2019. Habitat creation work is ongoing.	NRW WG	Y
20	Maintain links between the Network Action Plan and locally agreed actions, where they exist, and support exploration of funding opportunities.	This action will highlight and link to local actions of relevance, including specific local actions in the annual action plan as appropriate.	Will allow the sharing of best practice from different sites and encourage cross-site working as well as promoting the work done at the site level.	Reports produced by EMSOs and collated by MPAMSG EMSO advisor by June 2019.	Relevant Authority Groups	Y
21	Integrate sustainable management of the MPA network with the Area Statement Process.	Ensure that the MPA Management priorities are embedded in and integrated with the Marine Area Statement process and products, recognising that securing a well managed network of MPAs is a key tool in delivering SMNR and a resilient marine ecosystem.	Integration of marine planning and management processes and additional support for MPA network management delivery.	Development of first marine area statement (April 2019) and ongoing delivery.	NRW Management Authorities and all other relevant stakeholders	Y

Annex 1

Actions for delivery at a local level (at this stage)

Action	Description	Site	Resource secured: Y/N?
Identify and address issues affecting otters in Pen Llŷn a'r Sarnau SAC.	Consolidating information on otters within the Pen Llŷn a'r Sarnau SAC and implementing any management actions needed to maintain the feature. The otter will also be used engage with the general public.	Pen Llŷn a'r Sarnau SAC	Y
Litter Free Coast & Sea Somerset project.	Investigate the possibility of expanding the Litter Free Coast & Sea Somerset project to the south Wales coast (SEP project).	Severn Estuary EMS	Y
Investigate use of the Pembrokeshire Marine SAC by otters.	The study will build on existing work, and make use of trail camera technology, to try to establish if otters are resident on the coast or temporarily visiting the sea from inland waterways. Otter usage is known to be high, but when and how otters use the marine environment is less well understood. Generation of evidence to help inform management.	Pembrokeshire Marine SAC	Y
Produce a bilingual marine education resource for Pembrokeshire (with wider application).	Collate existing resource and increase availability to schools and organised groups to generate a greater understanding of the wildlife of Welsh seas. Cross-site collaboration planned, with input into all-Wales Visit Wales related outputs.	Pembrokeshire Marine SAC	Y
Investigate options for enhancing the crawfish population within MPAs.	Pilot project to investigate options for enhancing the crawfish population in Pen Llŷn a'r Sarnau SAC.	Pen Llŷn a'r Sarnau SAC	Y
Workshop on atmospheric nitrogen deposition into the Severn Estuary European Marine Sites.	Investigate the opportunity to work in partnership with Cardiff University's Water Research Institute to host a catchment-wide workshop.	Severn Estuary EMS	Y

Action	Description	Site	Resource secured: Y/N?
Identify and address water pollution issues at a catchment level.	Pilot project at Pen Llŷn a'r Sarnau SAC to improve the water quality of the SAC and reduce the stress on the site features. This will help the condition of multiple features and help input in other drivers such as water framework directive.	Pen Llŷn a'r Sarnau SAC	Y
Review existing data on nutrient condition, fish and freshwater invertebrates of the estuary feature in Pen Llŷn a'r Sarnau SAC.	Pilot project at Pen Llŷn a'r Sarnau SAC to better inform the conservation objectives and regulation 37 advice. The estuaries are low nutrient estuaries and need to be maintained as such.	Pen Llŷn a'r Sarnau SAC	Y
Increase nitrate and phosphate monitoring data for the Milford Haven waterway to aid pollution reporting and help inform management.	SWEPT (surveying waterway environment for pollution threats) citizen science project will generate data and raise awareness of the land run-off issue within the catchment and its impacts on the marine environment.	Pembrokeshire Marine SAC	Y
Review the intensity, frequency and distribution of land-based recreational activities ongoing within the Severn Estuary EMS.	ASERA Officer will work with RAs, NE, NRW, the Welsh Government and D&S IFCA to determine whether management measures are required in relation to the above, developing a strategic approach to visitor management (e.g. through zonation / beach management plans) where necessary.	Severn Estuary EMS	Y
Reduce recreational impacts on marine mammals.	Re-instate boat patrols by Ceredigion County Council to aid code of conduct enforcement, bottlenose dolphin population monitoring and impact studies, and essential education / awareness raising.	Cardigan Bay SAC	Y
Bait digging byelaw pilot.	The next stage in bait code work with enforcement, awareness raising, monitoring and displacement activity study to be conducted by NRW and partners.	Pembrokeshire Marine SAC	Y

Action	Description	Site	Resource secured: Y/N?
Establish recreational activity carrying capacity of the coast within MPAs.	Building on existing work, update Wales Activity Mapping data and expand to include angling.	Kenfig SAC Carmarthen Bay and Estuaries EMS Pembrokeshire Marine SC Cardigan Bay SAC	Y
Review shore-based angling, bait digging and boat-based recreational fishing activities.	Identify if there are any specific fishing related activities / sensitive locations / habitats / birds where there are likely to be potential impacts on the Severn Estuary EMS, activities / locations where there are no concerns, and locations where further information is required.	Severn Estuary EMS	Y
Reduce recreational impacts on MPA features.	Maintain work with local stakeholders as applicable to continue to raise awareness of and enforce well-established recreational codes of conduct. Review their effectiveness.	Severn Estuary EMS Carmarthen Bay and Estuaries EMS Pembrokeshire Marine SAC Skomer MCZ Cardigan Bay SAC Pen Llŷn a'r Sarnau SAC	Y

Annex 2

MPA Management Steering Group: Potential criteria for screening and scoring actions to include in the MPA Network Management Action Plan

Introduction

The MPA Management Steering Group (the Steering Group) has developed an MPA Network Management Framework to aid Welsh management authorities to better manage the MPA network in Wales. Alongside this Framework is the MPA Network Management Action Plan (NMAP) which will be updated and reported on an annual basis.

In the first year (2018/19) the NMAP is likely to focus on actions that are underway, fully funded or very likely to be funded. Even so, there needs to be some prioritisation of actions for this financial year given resource limitations (including staff time). At its meeting in March 2018, the Steering Group agreed to the development of transparent criteria that can be consistently applied to prioritise actions put forward for consideration for the NMAP.

This paper outlines the criteria developed for discussion with the Steering Group at a teleconference in May 2018, acknowledging the criteria will evolve for future rounds of the NMAP. These criteria have been developed from two processes NRW has used for prioritisation of marine work planning.

Screening and prioritisation of actions for inclusion in the NMAP

Table 1 summarises the proposed criteria; further detail to apply them is provided in the subsequent sections.

Table 1: Threshold scores and maximum scores for each criterion

#	Criteria	Threshold score	Maximum possible score
1	Is the action consistent with the MPA management principles?	2*	15
2	What is the spatial extent of the action?	2	3
3	What is the ability of the action to deliver improvements, or to improve our understanding of pressure / threats or their management?	2	3

* Against at least one of the management principles

#	Criteria	Threshold score	Maximum possible score
4	What is the feasibility of the action?	2	3
5	Does implementing the action represent value for money? Yes / No	N/A	N/A
	Total	8	24

We are proposing two screening measures:

1. If an action scores negatively against any of the MPA management principles in criterion 1 it should not be taken any further through the prioritisation process until these issues are addressed.
2. Only actions that reach the threshold score (as laid out in Table 1) for all criteria should be included in the NMAP¹.

Further consideration could be given on how the total score for an action could be used to differentiate between and therefore prioritise actions included in the NMAP, for example to determine the allocation of resources.

1. Is the action consistent with the MPA Management Principles?

This first criterion is focussed on the consistency of an action with the five MPA network management principles. Actions will be scored against each of the MPA management principles (Box 1); the maximum score achievable is therefore fifteen. An action may not be relevant for all management principles. If an action scores negatively against any management principle it will not be taken any further through the prioritisation process until these issues are addressed.

¹ Sponsors of actions that fail to reach the threshold should consider how it could be improved to reach that score before it is suitable to be included in the NMAP.

Box 1: MPA Management Principles

MP1 Strategic Planning: Management should be guided by strategic planning processes at both a sectoral and all-Wales level. It supports sustainable use of the MPA network in ways which conserve and enhance, and contributes towards resilient marine ecosystems, wellbeing and delivery of sustainable management of natural resources.

MP2 Regulation, development consenting and assessment processes: Regulatory processes and consenting decisions are delivered consistently and proportionately across the network, and proactively consider and support the maintenance or enhancement (where possible / appropriate) of the condition of relevant sites and features across the network.

MP3 Management advice and guidance: Decision-making and management operations is supported by clear and consistent advice and guidance on MPAs including their conservation objectives.

MP4 Understanding the condition of, and pressures and threats on, sites and their features to inform management: management is informed by formal assessment and reporting on the condition of features, sites and the network and the associated pressures. Assessment and reporting is informed by a prioritised evidence programme (including monitoring) which improves our understanding of the relationship between pressures and threats and condition.

MP5 Wider management: management activities across the network are prioritised towards those that have the potential for greatest improvement on condition and security of management. Common management challenges are address collectively across the network.

Use the following as a guide:

	Explanation	Score
N/A	The action has inconsistencies with the management principle.	-3
None	The action is not relevant to the management principle.	0
Low	The action is partially consistent with the management principle.	1
Medium	The action is consistent with the management principle.	2
High	The action is consistent with the management principle and will also bring about a positive change in ways of working.	3

2. What is the spatial extent of the action?

Scores should be allocated based on the scale of the impact of the action on the MPA network. Use the following as a guide:

	Explanation	Score
None	The action is for on a single site only and has no wider application across the network*.	0
Low	The action is for a small number of sites or a small proportion of the network.	1
Medium	<p>The action is for:</p> <ul style="list-style-type: none"> • multiple sites or • a large proportion of the MPA network or • a large proportion of a feature across the network. <p>A medium score can also be awarded if the action is a demonstration project# with strong potential to be delivered across the network after a local pilot stage.</p>	2
High	The action is for the network (e.g. whole feature and/or pressure wide).	3

* These actions should be prioritised though local action plans where they exist or the Actions Database.

A demonstration project would need to address an issue that is of concern across the network but suitable to be carried out at a single site level to prove the approach.

3. What is the ability of the action to deliver improvements in condition, or to improve our understanding of pressure / threats or their management?

The following criterion has been divided into two parts. An action should be taken through only one:

- Criterion 3a is linked to the ability of the action to address a known pressure on or threat² to features of the network.
- Criterion 3b addresses actions where there is a need to investigate a pressure or threat, or to investigate the appropriate management measure to address the pressure or threat.

² **Pressure:** A factor that is considered to be currently having an adverse impact on one or more features.

Threat: A factor that is not currently an issue but is considered likely to become an issue in the near future (defined as up to 2020) unless action is taken.

3a. What is the ability of the action to deliver improvements to, or maintenance of, feature condition?

This criterion is related to actions that will result in improvements to, or maintenance of, the condition of features of the MPA network by managing pressures / threats. Use the following as a guide:

	Explanation	Score
None	The action is not targeted at a pressure or threat with a link to feature condition.	0
Low*	Threat: The action will manage one or more of the suspected threats that could affect the condition of the MPA network features.	1
Medium	Pressure: The action will manage one or more of the known pressures affecting the condition of the features of the MPA network. Threat: The action will manage one or more of the threats that could affect the condition of the features of the MPA network.	2
High	Pressure: The action will manage one or more of the known pressures significantly affecting the condition of the features of the MPA network, using a proven approach. Threat: The action will manage one or more of the threats that could significantly affect the condition of the features of the MPA network using a proven approach.	3

* There is no low score for pressures as to be prioritised for the NMAP the pressure should be known.

3b. What is the ability of the action to improve our understanding of pressure / threats or their management?

This criterion is related to actions that will result in improving our understanding of the pressures or threats to the MPA network, or improving our understanding of the different management measures that could be used to address these pressures or threats. Use the following as a guide:

	Explanation	Score
None	The action will not improve our understanding of: <ol style="list-style-type: none"> pressures or threats; or the management measures needed to address them. 	0
Low*	Threat: The action will partially improve our understanding of: <ol style="list-style-type: none"> one of the threats which could affect the condition of the MPA network features; or the management measures needed to address this threat. 	1
Medium	Pressure: The action will increase our understanding of: <ol style="list-style-type: none"> one or more of the pressures and how they are affecting the condition of the features of the MPA network; or the management measures needed to manage those pressures. Threat: The action will improve our understanding of: <ol style="list-style-type: none"> one or more of the threats that could affect the condition of the features of the MPA network; or the management measures needed to manage those threats. 	2
High	Pressure: The action will significantly increase our understanding of: <ol style="list-style-type: none"> one or more of the pressures and how they are affecting the condition of the features of the MPA network; or the management measures needed to manage those pressures. Threat: The action will significantly improve our understanding of: <ol style="list-style-type: none"> one or more of the threats that could significantly affect the condition of the features of the MPA network; or the management measures needed to manage those threats. 	3

* There is no low score for pressures as to be prioritised for the NMAP the pressure should be known.

4. What is the feasibility of the action?

This criterion relates to the technical feasibility of carrying out an action.

Technical feasibility: includes practical, logistical and technical ability (including skills and expertise) to undertake an action.

Use the following as a guide:

	Explanation	Score
None	The action is not technically feasible, even if resources were available.	0
Low	The technical feasibility of the action is currently unproven.	1
Medium	There are no significant issues with technical feasibility.	2
High	Technical feasibility is proven.	3

5. Does implementing the action represent value for money?

This criterion relates to the value for money of the action. This is a simple yes or no answer, but the yes answer will need to be justified. There is no scoring associated with this criterion.

Does implementing the action represent value for money? Yes / No

If yes, please justify your answer considering how proportionate the cost is to the size of the project and the benefits it will deliver (*please include the direct costs as well as other resources necessary to achieve the action and the expected outcomes of the project linked to improvements in condition or understanding*).

Contents

Section 1	
Introduction	3
Section 2	
The network of Marine Protected Areas in Wales	5
Section 3	
Vision, objectives and principles for management of the network	9
Section 4	
How Marine Protected Areas are managed in Wales	12
Section 5	
Improving the management and condition of the network of Marine Protected Areas	21
Annex 1	
Lists of species and habitats protected at each Marine Protected Area in Wales	22
Annex 2	
Further information and guidance	50
Annex 3	
Management Authorities in Wales	54

Key Terms	Definition and Explanation
Competent Authority	An authority, as defined by the Conservation of Habitats and Species Regulations (2017) and the Conservation of Offshore Marine Habitats and Species Regulations (2017) which must exercise their functions which are relevant to nature conservation, including marine conservation, so as to secure compliance with the requirements of the Habitats and Birds Directives.
EIA	Environmental Impact Assessment. It aims to prevent, reduce or offset the significant adverse environmental effects of development proposals, and enhance positive ones.
EMS	European Marine Site. An area which has been designated under European legislation to provide protection for a marine feature or features. A collective term for marine SACs and SPAs.
HRA	Habitats Regulations Assessment. A recognised step by step process which helps determine likely significant effect and (where appropriate) assess adverse impacts of a plan or project on the integrity of a European site, examines alternative solutions, and provides justification for IROPI.
Inshore	The area of Welsh seas out to 12 nautical miles.
IROPI	Imperative Reason(s) of Overriding Public Interest. If it is not possible to avoid a significant adverse effect of a project on any site, the project may only proceed if there are imperative reasons of overriding public interest.
Management Authority	A term used throughout this Framework to refer collectively to organisations with statutory responsibilities in relation to any type of MPA, or who are significant seabed or coastal land owners. This includes relevant and competent authorities as defined by the Conservation of Habitats and Species Regulations (2017), the Conservation of Offshore Marine Habitats and Species Regulations (2017) and public authorities as defined by the Marine and Coastal Access Act (2009).
MCZ	Marine Conservation Zone. The designation process is set out in Part 5 Chapter 1 of the Marine and Coastal Access Act (2009).

Key Terms	Definition and Explanation
MPA	Marine Protected Area. A general term for an area designated under legislation for the conservation of habitats, species or other natural features.
Offshore	The area of Welsh seas from beyond 12 nautical miles to the limits of UK territorial waters (the median line) as illustrated by the map at Figure 2.
OSPAR MPAs	MPAs submitted to the OSPAR Commission for inclusion in their network of MPAs.
RAG	Relevant Authority Group. A voluntary working arrangement established by some management authorities to help them deliver their responsibilities for MPA management.
Relevant Authority	An authority, as defined by the Conservation of Habitats and Species Regulations (2017) and the Conservation of Offshore Marine Habitats and Species Regulations (2017) which has functions in relation to land or waters within or adjacent to a marine protected area.
SAC	Special Area of Conservation. An area designated under the Conservation of Habitats and Species Regulations (2017) and the Conservation of Offshore Marine Habitats and Species Regulations (2017) to protect certain habitats and species (except birds).
SEA	Strategic Environmental Assessment. A formal process for assessing the effect of a plan or programme on the environment. It aims to provide a high level of protection to the environment and to promote sustainable development by the integration of environmental considerations into the preparation and adoption of plans or programmes.
SPA	Special Protection Area. An area classified under the Conservation of Habitats and Species Regulations (2017) and the Conservation of Offshore Marine Habitats and Species Regulations (2017) to protect certain species of birds.
SSSI	Site of Special Scientific Interest. Designated under the Wildlife and Countryside Act (1981) to protect the best examples of wildlife and geology in Wales. SSSIs are primarily a terrestrial designation, although they can cover the seashore down to the lowest tide.

Section 1

Introduction

The Marine Protected Area (MPA) Network Management Framework for Wales (the “Framework”) has been produced by the MPA Management Steering Group¹. It sets out the structure for improving the management and condition of the network of MPAs in Wales for the period 2018 – 2023. The Framework has a five year lifecycle to allow for delivery of actions ahead of the report due in 2023 under Section 124 of the Marine and Coastal Access Act (2009). The Framework seeks to align with and complement international management and reporting requirements, and will continue to apply once the UK has left the European Union. An annual MPA Network Management Action Plan will set out the priority actions identified to maintain or improve the condition of the network of MPAs in Wales.

Having a clear understanding of the condition of sites and their features, and effective management of MPAs, is essential to achieving conservation objectives and securing an ecologically coherent and well managed network of MPAs in Wales. Effective management of MPAs maximises the contribution the MPA network can make to the health and resilience of marine ecosystems, to Blue Growth² and to sustainable, productive fisheries now and into the future.

The Framework contributes to:

- the aims of the Well-being of Future Generations (Wales) Act (2015)³ to improve the long-term social, economic, environmental and cultural well-being of Wales. The Act requires the majority of management authorities⁴ to work in accordance with the sustainable development principle to meet the needs of the present without compromising the ability of future generations to meet their own needs.
- the Environment (Wales) Act (2016)⁵ in promoting the principles of Sustainable Management of Natural Resources including a focus to maintain and enhance biodiversity, and contribute to wider ecosystem resilience.
- the objectives of the Nature Recovery Action Plan (NRAP) for Wales⁶, the Welsh Government’s national strategy for biodiversity which was published in 2015.
- the aims of the UK Marine Strategy⁷ to protect the marine environment, prevent its deterioration and restore it where practical, while providing for sustainable use of marine resources.
- the UK commitment to the OSPAR Commission⁸ to contribute towards a well-managed and ecologically-coherent network of MPAs in the North-East Atlantic.

¹ Terms of reference for the MPA Management Steering Group:
gov.wales/docs/drah/publications/151118-marine-protected-areas-management-steering-group-terms-of-reference-en.pdf

² Sustainable growth of marine and maritime sectors.

³ gov.wales/docs/dsjlg/publications/150623-guide-to-the-fg-act-en.pdf

⁴ In this Framework the term management authorities (MAs) is used to refer collectively to all organisations with statutory responsibilities in relation to any type of MPA, or who are significant seabed or coastal land owners. This includes relevant and competent authorities under the Habitats and Species Regulations 2017 and public authorities under the Marine and Coastal Access Act 2009 and the Natural Environment and Rural Communities Act 2006 (CROW Act).

⁵ gov.wales/topics/environmentcountryside/consmanagement/natural-resources-management/environment-act/?lang=en

⁶ gov.wales/topics/environmentcountryside/consmanagement/conservationbiodiversity/?lang=en

⁷ www.gov.uk/government/publications/marine-strategy-part-one-uk-initial-assessment-and-good-environmental-status

⁸ www.ospar.org/about

The Welsh Government has overall responsibility for ensuring Wales' network of MPAs is effectively managed. Management, however, is a shared responsibility across management authorities, including those who have statutory obligations to manage Welsh seas or who are significant seabed or coastal landowners. The Welsh Government works with representatives of the key management authorities in Wales through the MPA Management Steering Group to provide leadership and a strategic steer for the management of the network of MPAs in Wales. The Group's membership provides links to local stakeholder groups at the site level and also to the national stakeholder forum, the Wales Marine Advisory and Action Group. This means the MPA Management Steering Group is well-placed to provide information and strategic direction on the needs for MPA management at the local, multi-site and national level.

The Framework is designed to provide a steer to management authorities who have statutory roles and responsibilities in relation to the network of MPAs in Wales. It includes information on relevant management priorities and activities to improve the condition of the network of MPAs in Wales as a whole. However, everyone has a role in protecting the marine environment and the Steering Group acknowledges the role of volunteers in safeguarding the wildlife and habitats within Wales' marine environment. Group members hope this will continue in future.

Section 2 provides information on the network of MPAs in Wales including the different designations, the number of sites in Welsh waters and where they are located. The network includes MPAs in all Welsh waters, in line with the Welsh Government's extended remit for marine nature conservation in the offshore area⁹. The Framework is designed to apply to all existing and any additional MPAs incorporated into the network in the future.

Section 3 sets out the MPA Management Steering Group's collective vision and objectives for management of the network. This Framework is a key tool for how this vision and the objectives are delivered.

Section 4 outlines activity already underway that contributes to the management of MPAs. Effective application of strategic and project planning, regulation and assessment processes are the primary mechanisms for MPA management. These processes help secure and maintain the conservation objectives of sites, the wider benefits of the MPA network and prevent negative impacts. Other forms of MPA management focus on unregulated activities and delivery of local management actions.

Section 5 highlights how the MPA Network Management Action Plan will be used to improve the management and condition of the network of marine protected areas in Wales. Management authorities, and other interested parties, are encouraged to consider how they can help to progress these actions for the benefit of the marine environment. It also sets out governance and process arrangements for this Framework and MPA Network Management Action Plan.

The Annexes to this Framework contain information on the marine species and habitats protected at sites in Wales, information and guidance for MPA management, and details of Management Authorities in Wales and their responsibilities for MPA management.

⁹ The Conservation of Offshore Marine Habitats and Species Regulations 2017 and the Wales Act 2017.

Section 2

The Network of Marine Protected Areas in Wales

The network of MPAs in Wales is made up of different types of sites designated to protect a range of features. Table 1 sets out the type of MPA, what they protect and the relevant legislation or convention used to designate them. There are different management arrangements for each type of designation which is explored further in Section 4.

Table 1

Type of MPA	What is Protected?	What is the legislative Driver?
Special Protection Areas	These sites protect wild and migratory birds as listed in Annex I of the Directive, and the habitats they rely on for essential behaviours such as feeding and breeding.	EU Directive on the Conservation of Wild Birds (Council Directive 2009/147/EC)
Special Areas of Conservation	These sites protect a range and variety of habitats and (non-bird) species of European importance as listed in Annex I and II of the Directive.	EU Habitats and Species Directive (Council Directive 92/43/EEC)
Marine Conservation Zone	These sites protect a range of habitats, species, geological and geomorphology features which are considered nationally important.	Marine and Coastal Access Act (2009)
Ramsar Site	These sites protect wetlands which are considered to be internationally important.	Convention on Wetlands of International Importance (1971)
Sites of Special Scientific Interest (where these have marine components)	These sites protect the best examples of the UK's flora, fauna, geological or physiographical features. Although they are primarily a terrestrial designation, they can cover the seashore down to the lowest tide.	Wildlife and Countryside Act 1981 (as amended)

All MPA designations are relevant under the EU Marine Strategy Framework Directive

There are 140 sites in Welsh waters made up of:

- 13 Special Protection Areas (SPAs);
- 15 Special Areas of Conservation (SACs);
- 1 Marine Conservation Zone (MCZs);
- 107 Sites of Special Scientific Interest (SSSIs); and
- 4 Ramsar sites.

Some MPAs, such as coastal SACs and SSSIs, share common boundaries but are included separately, as they are designated under different pieces of legislation and in many cases protect different features of interest. Annex 1 sets out a full list of MPAs in Wales with the features they have been designated to protect.

Taken together, these MPAs form a network around Wales. They make a substantial contribution towards an ecologically coherent network of MPAs in the UK and a wider network of sites¹⁰ in the North-East Atlantic established by the OSPAR Commission. An assessment of the network¹¹ in Wales completed by the JNCC in 2016 concluded sites are well connected with the majority of habitats and species represented and, where possible, replicated to provide resilience in the network. A well designed and managed network of MPAs improves resilience in the marine environment.

Figure 1 shows the network of MPAs in Welsh waters as at July 2018. Figure 2 shows a map of the network of MPAs in UK waters.

¹⁰ jncc.defra.gov.uk/page-4526

¹¹ jncc.defra.gov.uk/pdf/JNCC_NetworkProgressWelshWaters_Final.pdf

Figure 1: The network of Marine Protected Areas in Wales

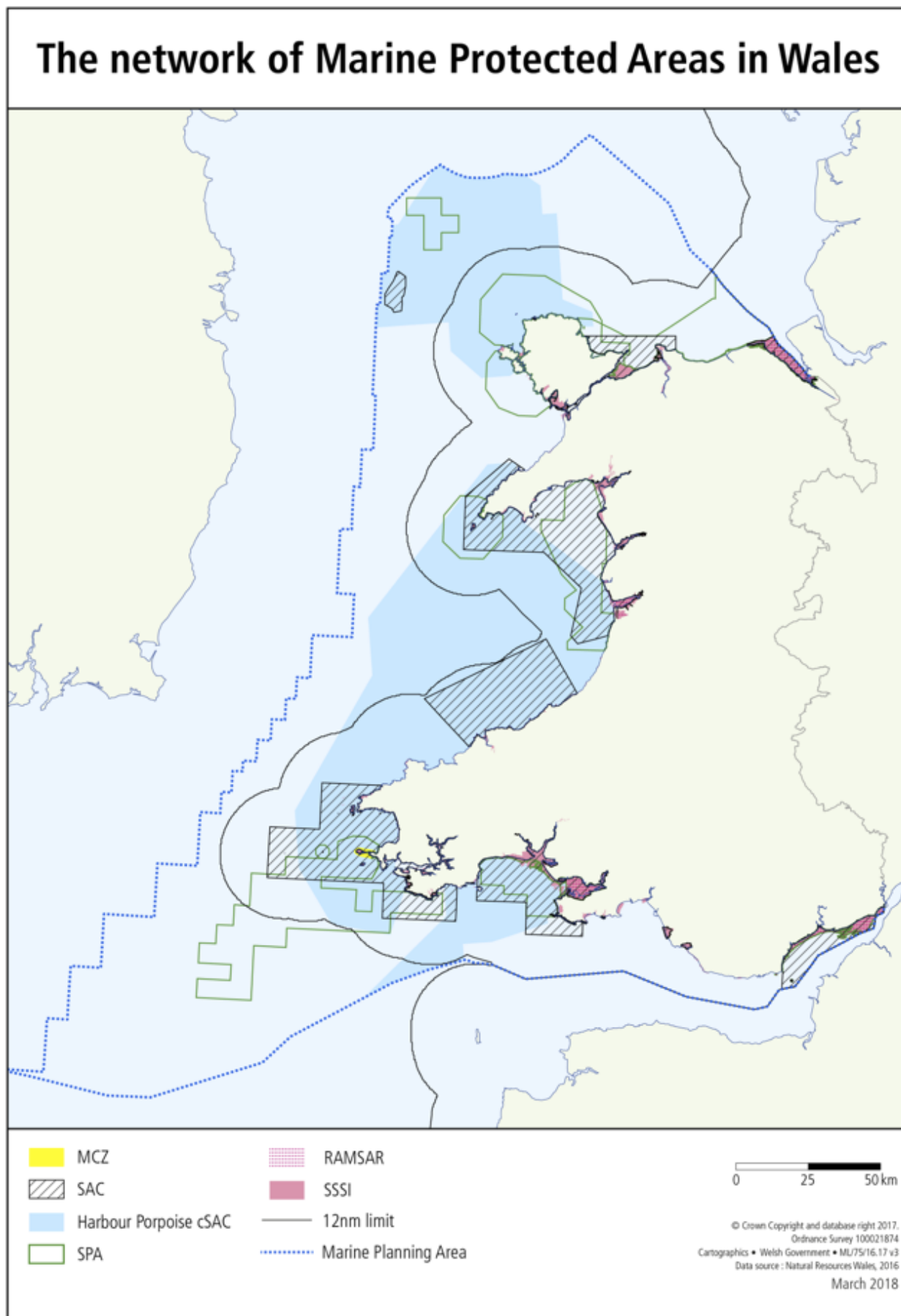
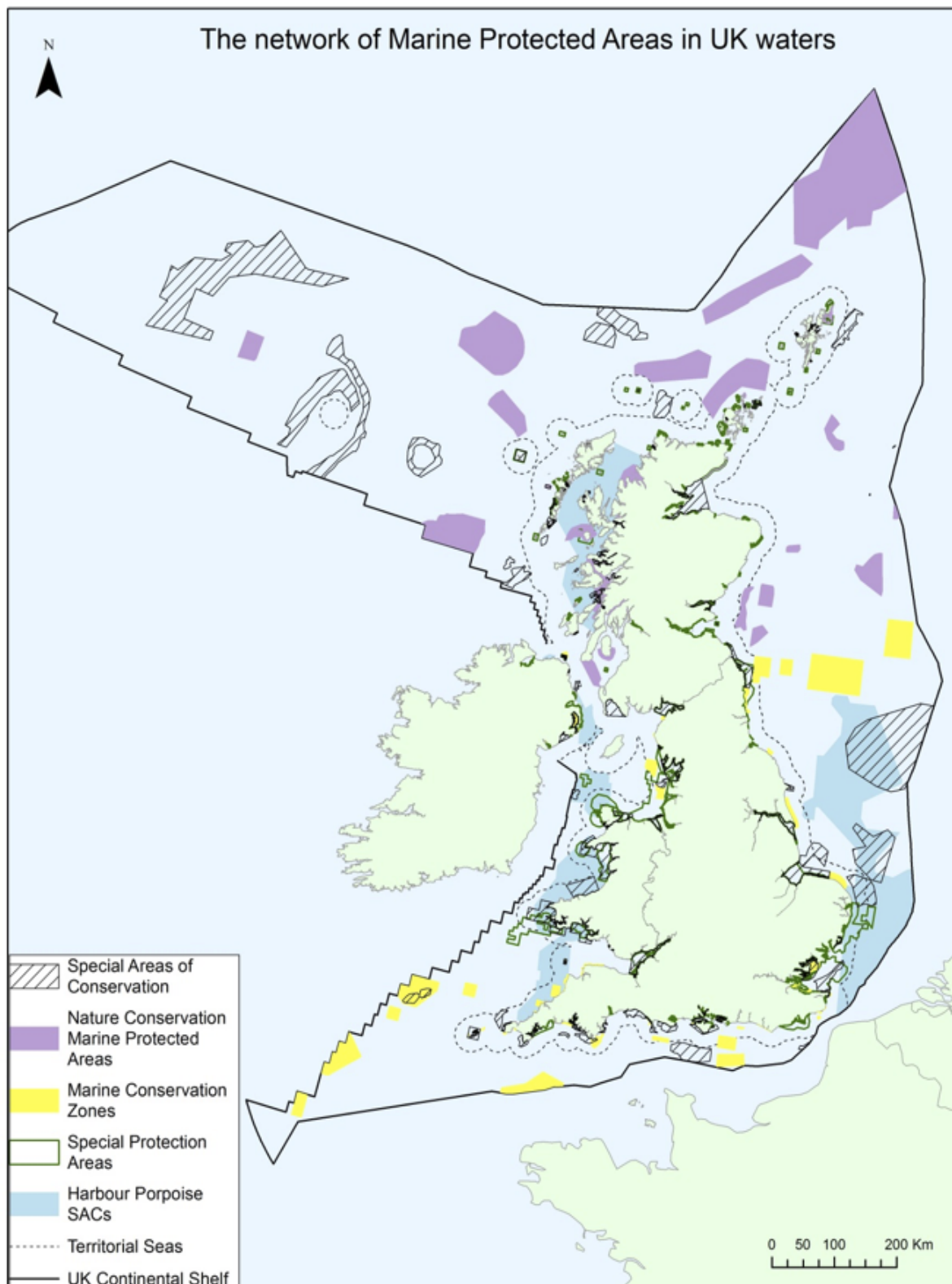


Figure 2: The network of Marine Protected Areas in UK waters



© JNCC 2018
UK Territorial Sea Limit. © Contains public information licensed under the Open Government Licence v3.0.
Contains derived data from Ordnance Survey © Crown copyright. 100019741 (2015).
Contains UKHO data © Crown copyright. All rights reserved. The exact limits of the UK Continental shelf are set out in orders made under section 1 (7) of the Continental Shelf Act 1964 and Continental Shelf (Designation of Area) Order 2013.
Combining source layers from UKHO. © Crown copyright © JNCC. World Vector Shoreline © US Defence Mapping Agency.
Not to be used for navigation.

Section 3

Vision, objectives and principles for management of the network

The MPA Management Steering Group has agreed a vision and objectives for the management of the network of MPAs in Wales. The agreed vision and objectives aim to secure effective management of the MPA network in Wales which ultimately improves condition, safeguarding marine biodiversity, the wider ecosystem and the socio-economic benefits for Wales.

Vision

The Welsh MPA network is under effective and consistent management which safeguards the marine wildlife and habitats of sites, and leads to site features achieving or maintaining favourable condition. Network management supports resilient marine ecosystems which in turn help to achieve clean, safe, healthy, sustainable, resilient, productive and biologically diverse Welsh seas. MPAs are valued for the long-term benefits they provide to the people of Wales through the protection of their rich natural and cultural heritage.

Objectives

The five objectives agreed by the MPA Management Steering Group for the management of the network are:

I. Sustainable management of the MPA network

Objective: To achieve effective protection through proportionate and secure management arrangements, addressing common management challenges across the network. The management of the MPA network has a well-developed and flexible programme of long-term, sustainable funding.

II. Effective leadership

Objective: MPA network management is guided by clear and effective leadership, commitment and support at both governmental and management authority levels, with a shared vision, ambition and capacity to achieve success.

III. Participative and engaged communities

Objective: Marine users and communities are proud to celebrate the Welsh MPA network, they understand the value of the network, its benefits and how it is managed. National and local stakeholders – from members of the public through to the public, private and third sectors – have a recognised role and assist in relevant management decisions for the MPA network. All communications are clear and transparent and marine users are aware of, understand, and comply with any relevant regulations and guidance, such as codes of practice.

IV. Clear Governance structures

Objective: The MPA network has well established effective and transparent mechanisms for addressing and delivering aspirations, strategies and obligations to support effective management.

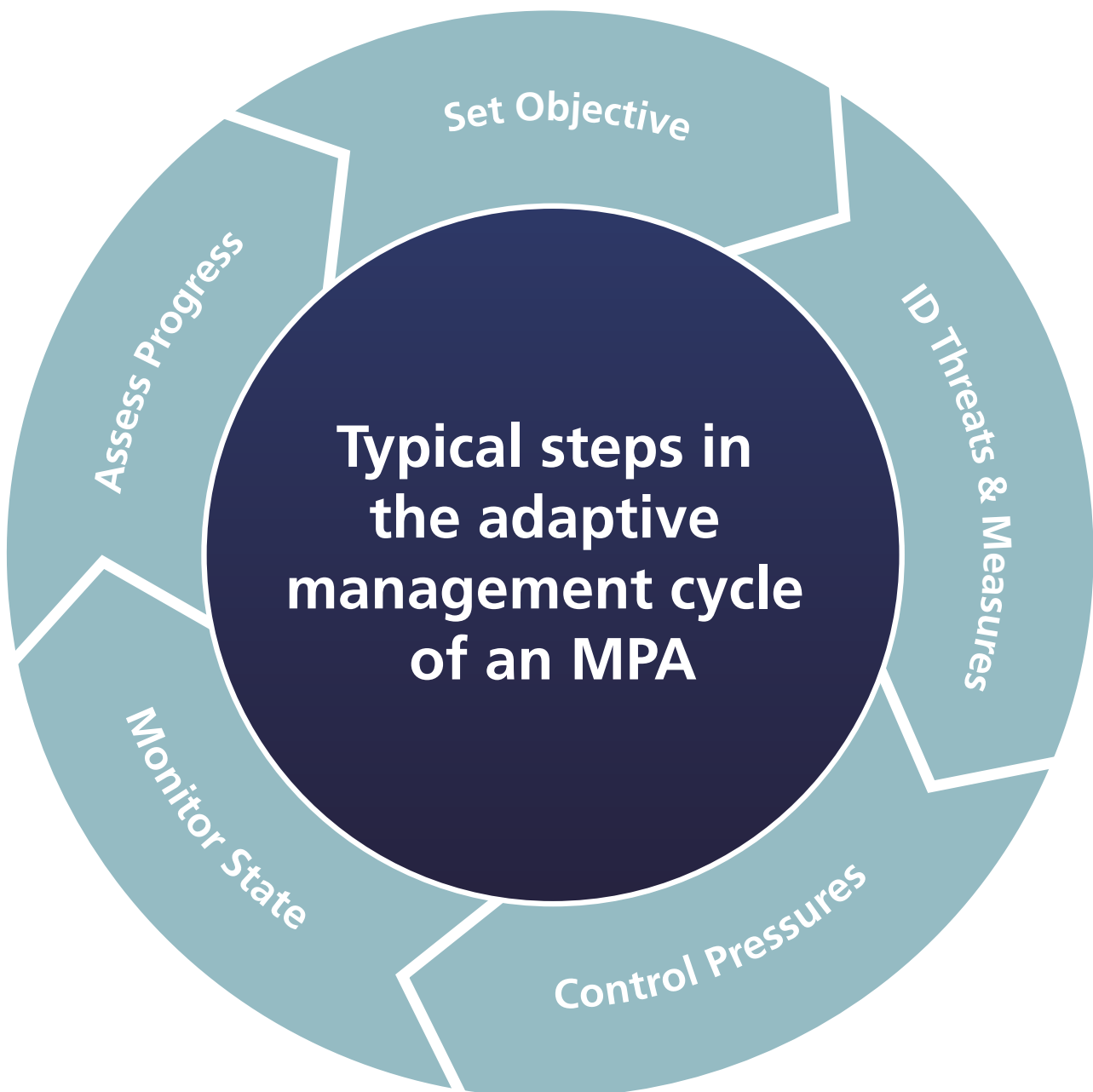
V. Adaptive management

Objective: Management of the network is adaptive, incorporating change as new information becomes available. Environmental, social, cultural and economic information is used to support management, and is regularly updated and used for effective decision-making.

The vision and objectives for the management of the network in Wales align with the OSPAR Commission guidance on managing the network of MPAs¹².

Figure 3 sets out an adaptive management cycle with five distinct stages, as identified by the OSPAR Commission.

Figure 3



¹² www.ospar.org/documents?d=32690

In 2016 the OSPAR Commission developed a questionnaire approach to assess the effectiveness of site management. The questionnaire covered two broad themes, each with two specific questions:

1. Consider implementation of the MPA management cycle:
 - Is the MPA management documented?
 - Are the measures to achieve the conservation objectives being implemented?
2. Review whether the MPA is meeting its conservation objectives:
 - Is a monitoring plan in place to assess if measures are working?
 - Is the MPA moving towards or has it reached the conservation objectives?

NRW and the Joint Nature Conservation Committee (JNCC) used this approach to assess the management of MPAs in Welsh seas. The assessment concluded the OSPAR MPAs (marine SACs and SPAs) in Wales are progressing towards being well managed. It also concluded environmental, social and economic information is used to support management, and is regularly updated and used for effective decision-making. This means management of the network incorporates change as new information becomes available, whilst protecting the network against adverse effects.

The MPA Management Steering Group has developed five management principles to guide delivery of the vision and objectives for the management of the network. The management principles are:

Box 1: Management Principles

MP1 Strategic Planning: Management should be guided by strategic planning processes at both a sectoral and all-Wales level. It supports sustainable use of the MPA network in ways which conserve and enhance condition, support resilience of marine ecosystems, support wellbeing and deliver sustainable management of natural resources.

MP2 Regulation, development consenting and assessment processes: Regulatory processes and consenting decisions should be delivered consistently and proportionately across the network, and proactively consider and support the maintenance or enhancement (where possible/appropriate) of the condition of relevant sites and features across the network.

MP3 Management advice and guidance: Decision-making and management operations should be supported by clear and consistent advice and guidance on MPAs including their conservation objectives.

MP4 Understanding the condition of, and pressures and threats on, sites and their features to inform management: Management should be informed by, and consistently refer to, formal assessment and reporting on the health and condition of features, sites and the network as a whole. Assessment and reporting is informed by a prioritised monitoring programme that improves understanding of condition, change and impacts across aspects of the network where key pressures are identified.

MP5 Wider management: Management operations on individual and multiple sites should be prioritised to ensure delivery of activity that has the potential for greatest improvement in the management of key pressures, and on condition, across the network. Management activities may maintain or enhance feature condition, identify and address particular local issues and pressures, and raise awareness of MPAs through targeted interventions and engagement with members of the public.

Section 4

How Marine Protected Areas are managed in Wales

This section sets out how MPAs are managed in Wales and the activities already underway which contribute to the effective management of the MPA network in Wales.

Although the Welsh Government has overall responsibility for ensuring Wales' network of MPAs is effectively managed, the delivery of management is a shared responsibility across a number of organisations. In this Framework these are referred to as management authorities. Management authorities are organisations with statutory responsibilities in relation to any type of MPA, or who are significant seabed or coastal land owners. They include relevant and competent authorities under The Conservation of Habitats and Species Regulations (2017), the Conservation of Offshore Marine Habitats and Species Regulations (2017) and public authorities under the Marine and Coastal Access Act (2009).

Table 2 gives a summary of key management authorities operating in Wales involved in managing MPAs.

Table 2

Sector	Management Authorities
Local Government	Monmouthshire County Council Newport City Council Cardiff County Council Vale of Glamorgan County Council Bridgend County Borough Council City and County of Swansea Carmarthenshire County Council Pembrokeshire County Council Ceredigion County Council Powys County Council Gwynedd County Council Anglesey County Council Conwy County Borough Council Denbighshire County Council Flintshire County Council
National Park Authorities	Pembrokeshire Coast National Park Authority Snowdonia National Park Authority
Water and Sewerage Undertakers	Dŵr Cymru Welsh Water
National Government	Welsh Government UK Government

Sector	Management Authorities
Port and Harbour Authorities	Gloucester Harbour Trustees Newport Harbour Commissioners ABP Newport ABP Cardiff Saundersfoot Harbour Commissioners Milford Haven Port Authority Port of Mostyn Ltd.
Statutory Nature Conservation Bodies	Natural Resources Wales Joint Nature Conservation Committee
General Lighthouse Authorities	Trinity House
Land owners	The Crown Estate Network Rail The National Trust Oil & Gas Authority

A more complete overview of the main management authorities in Wales, their statutory responsibilities and the legislation and conventions which apply to them is set out in Annex 3.

Management can be carried out by authorities either working individually or collaboratively to achieve shared responsibilities, goals and outcomes for an MPA. A number of management authorities in Wales already work together in this way through Relevant Authority Groups, local advisory committees and local partnerships to support delivery of management at the following MPAs within the network:

- Pen Llŷn a'r Sarnau SAC
- Cardigan Bay SAC
- Dee Estuary SAC and SPA
- Pembrokeshire Marine SAC
- Carmarthen Bay and Estuaries SAC and SPA
- Severn Estuary SAC and SPA
- Skomer MCZ

There is also scope for some management authorities to work collaboratively through Public Service Boards¹³ to improve the economic, social, environmental and cultural well-being in the Board's area by delivering common management goals.

Management of MPAs takes many forms and can depend upon the type of designation. Some management applies to activities or users across the network, and some management activity is carried out at individual sites. Effective application of strategic and project planning, regulation and assessment processes are the primary mechanisms for MPA management to secure and maintain conservation objectives, prevent negative impacts and damage to features and secure wider benefits for the MPA network.

¹³ More information about Public Service Boards and their role is available here: gov.wales/topics/improvingservices/public-services-boards/?lang=en

Other examples of MPA management, which lead to improvements in site and feature condition where needed, include:

- Management of unregulated activities;
- Working with landowners through management agreements (e.g. SSSIs);
- Orders to control speed limits (such as at Skomer MCZ), and
- Delivery of management actions at site, multi-site and national level.

4.1 Strategic planning

Strategic planning and assessment ultimately aims to optimise the use of available resources, whilst minimising adverse environmental and socio-economic impacts, including those on MPAs. Examples of strategic plans which take account of Welsh MPAs are the Welsh National Marine Plan and the UK Marine Strategy. Strategic plans are also published by government and The Crown Estate for the issue of development rights and seabed leases in connection with sectoral development programmes for offshore oil and gas, renewable energy and aggregate extraction.

Marine planning

The Welsh National Marine Plan recognises the significance of Welsh seas to the people of Wales and the role they play in supporting well-being. Once adopted, the Marine Plan will set the strategic direction for the sustainable use of Welsh seas. It will guide all decision-making in the marine area aiming to maximise the use of the available marine resource, supporting blue growth, while minimising adverse environmental, social and economic impacts, including those on MPAs. It will also help deliver the UK Marine Strategy.

Decisions which may affect the marine plan area must be made in accordance with the plan (unless relevant considerations indicate otherwise). This requirement includes compliance with a range of environmental policies including policies which protect and seek to enhance ecosystem resilience, in particular:

Draft WNMP policy – ENV_01: Resilient marine ecosystems:

- Proposals should demonstrate how they contribute to the protection, restoration and/or enhancement of marine ecosystems.

Draft WNMP policy – ENV_02: Marine Protected Areas:

- Proposals should demonstrate how they:
 - avoid adverse impacts on individual MPAs and the coherence of the network as a whole;
 - have regard to the measures to manage MPAs; and
 - avoid adverse impacts on non-marine designated sites.

River Basin Management Plans

Prepared by NRW and approved by Welsh Ministers, these Plans outline how water bodies in Wales will meet the requirements of the EU's Water Framework Directive. This includes coastal waters up to one nautical mile. The Water Framework Directive requires Member States to meet other relevant Directives, including the Habitats and Birds Directives. As a result the River Basin Management Plans include measures to bring coastal SACs and SPAs into favourable condition.

NRW Marine Area Statement

NRW is required to prepare area statements under Section 11 of the Environment (Wales) Act (2016) to help facilitate the implementation of the Natural Resources Policy (NRP) and support the Sustainable Management of Natural Resources. The first suite of seven area statements is being developed from 2018, with one of these covering the inshore marine area of Wales. The marine and terrestrial area statements will work together for join-up at the land-sea interface, particularly where source and impacts cross the coast. The development of the marine area statement will be driven by the over-arching framework set out through the marine planning process, as highlighted in the NRP, and will also integrate with the aims and intended outcomes of the Framework.

Sectoral planning

Sectoral development planning in the marine environment is carried out at a large scale, typically national or regional. Sectoral plans are accompanied by assessments which take Welsh MPAs into account. Examples include plan-level Habitats Regulations Assessments published by The Crown Estate in support of their strategic seabed leasing programmes for renewable energy¹⁴ and aggregate extraction. The Oil and Gas Authority publish plans as part of their offshore licensing rounds for the oil and gas industry¹⁵.

UK Marine Strategy

The UK Marine Strategy is the UK response to the delivery of the EU Marine Strategy Framework Directive. The aim of the Strategy is to move towards achieving Good Environmental Status (GES) across UK seas.

The legislation requires an ecosystem approach to the management of UK seas and this scale integrates well with a network approach to MPA management. The Strategy includes:

- an assessment of the current status of UK seas in relation to the state of the marine environment and pressures;
- a programme of measures to move towards achievement of GES; and
- a monitoring programme to monitor status, change and progress.

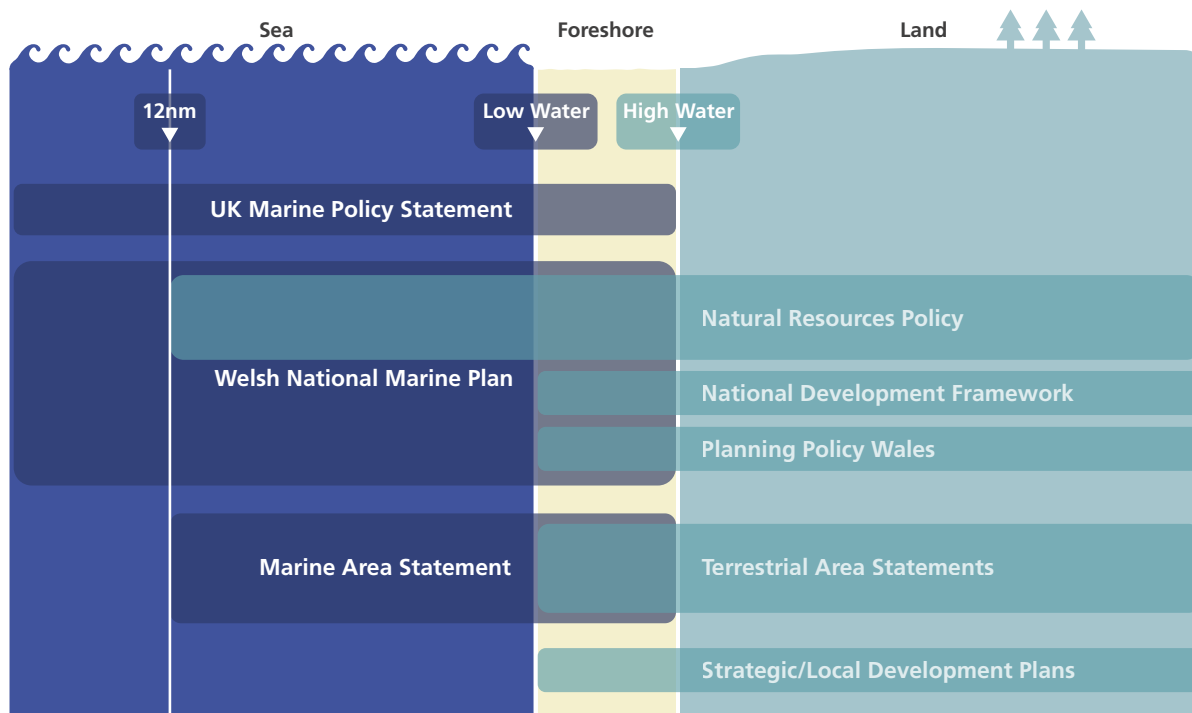
An ecologically coherent and well-managed network of MPAs is a key measure within the UK Marine Strategy. Many of the measures for, and indicators of, GES relate directly to the condition and security of management of the network of MPAs.

¹⁴ www.thecrownestate.co.uk/energy-minerals-and-infrastructure/offshore-wind-energy/

¹⁵ www.ogauthority.co.uk/licensing-consents/overview/

Figure 4 sets out the spatial relationship between marine and terrestrial planning systems and natural resource management regimes across land, shore and sea to 12nm and the midline.

Figure 4: Spatial relationship between marine and terrestrial planning systems



4.2 Regulatory consenting and assessment processes

Many marine developments require careful consideration to understand the effects they may have on MPAs at both the strategic and project level to ensure MPAs are effectively managed and their condition maintained or enhanced. The regulatory regime applies to all types of MPAs (including Ramsar sites, which, as a matter of Welsh Government policy, are treated in the same way as if designated under the Habitats and Birds Directives).

The following text gives a broad overview of the regulatory position but is not intended to provide definitive legal advice.

Regulatory consenting

Management authorities such as the Welsh Government, NRW and local authorities principally manage MPAs through the regulatory consenting process. Advice is given to developers at an early stage before activities occur. Where necessary the effects of activities are assessed before consents are issued to prevent negative impacts, secure the conservation objectives of MPAs and the wider benefits of the network.

Management authorities have legal duties towards the protection of SSSIs if they are undertaking activities or operations that may affect the features of the site. This duty also applies where authorities are authorising others to undertake activities or operations that may affect an SSSI. NRW must inform landowners and management authorities exactly where every SSSI is, explain why it is protected and provide information about the potentially damaging operations for the site. This information is usually brought together in a Site Management Statement.

There are a range of mechanisms for issuing consents for activities in the marine environment, such as the Conservation of Habitats and Species Regulations (2017) and the Harbours Act (1964). Many activities will require a marine licence under the Marine and Coastal Access Act (2009).

Marine licences apply to certain activities proposed within Welsh waters which typically involve the deposit of substances or objects into the sea or onto the sea bed, construction, improvement or alteration works, and any form of dredging. Marine licensing is delivered by NRW on behalf of Welsh Ministers, with approximately 60-70 licence applications determined annually for activities occurring within or near to MPAs in Wales. Where necessary conditions are attached to marine licences to protect the environment, human health and other users of the sea.

Once the Wales National Marine Plan (WNMP) has been adopted, public authorities must take any authorisation or enforcement decision in accordance with the policies in the plan. This includes those relating to MPAs unless relevant considerations indicate otherwise. Public authorities must also have regard to the WNMP in taking any other decision which relates to the exercise of functions capable of affecting the whole or any part of Welsh seas.

Assessments

Large scale (typically national or regional) development plans and programmes are usually subject to a Strategic Environmental Assessment (SEA). This is the process of appraisal through which environmental protection and sustainable development considerations are factored into Government (and other) plans and programmes. High-level plans, such as the Marine Plan, and individual project proposals may also be subject to the requirement to undertake Environmental Impact Assessment (EIA) and/or a Habitats Regulations Assessment (HRA) (or similar for MCZs) before consent can be given.

A large range of activities are assessed and managed in this way, including (but not limited to):

- Port development
- Gas storage
- Marine energy such as offshore wind and tidal stream
- Coastal development
- Coastal defence
- Aggregate extraction
- Cable laying
- Oil and Gas
- Discharges

Projects requiring an EIA will produce an Environmental Statement of the implications of the project, which will typically include the information necessary to allow a regulator to undertake an HRA (or similar for MCZs) before any development can be approved.

The purpose of the HRA process is to prevent significant adverse effects of an activity on the integrity of SACs and SPAs. Depending on the outcome of these assessments, mitigation and/or compensatory measures may be required before a development can be approved.

If it is not possible to avoid a significant adverse effect of a project on any site, the project may only proceed if:

- there are no alternatives that are better from an environmental perspective;
- the project is of overriding public interest; and
- compensatory measures are secured to ensure the coherence of the MPA network.

A similar process of assessment is required for MCZs in line with the Marine and Coastal Access Act (2009). Here management authorities have a duty to consider and assess the effect of proposed activities on MCZs when deciding whether to authorise them.

Activities should also be considered for compliance with the Water Framework Directive (WFD). The assessment should identify if the activity may have an impact on the objectives in the water body it is located, or any hydrologically linked water bodies. Many estuarine and coastal WFD waterbodies in Wales overlap with our MPAs.

4.3 Management advice and guidance

Management advice and guidance comes in a number of forms including advice for developers, for management authorities and other marine users.

These include:

- **The Welsh National Marine Plan**, which will set the strategic direction for the use of Welsh seas, providing the overall context for managing marine activities in a sustainable way. Information supporting the marine planning process is available through the Wales Marine Planning Portal¹⁶, which contains online maps showing the distribution of human activities and natural resources in Welsh seas.
- **Conservation objectives and advice**¹⁷: NRW provides conservation objectives and advice on operations for Welsh SACs and SPAs within 12 nautical miles of the coast. NRW and Natural England (NE) work together to provide this information for cross-border sites. JNCC produces similar information for offshore sites. SSSIs have a Site Management Statement (SMS) prepared by NRW which informs the land owner/occupier of the aspirations for the site and information on potentially damaging operations.
- **Core management plans**: Developed primarily for terrestrial SACs, these plans contain management requirements for the SACs at the coast which support marine features. Where relevant these plans also contain management requirements for overlapping SSSIs.
- **Management schemes**: Five Special Areas of Conservation have developed management schemes under Regulation 38 of the Habitats Regulations 2017. These plans contain information on the sites, their features and actions to improve condition.
- **Codes of conduct**: These have been developed by sectors or areas and contain advice to sea users and the general public on what they should do to safeguard the features of a site e.g. the RYA boating code, the code of conduct for divers at Skomer MCZ and the Gwynedd marine code.

In March 2018 the JNCC published updated conservation advice¹⁸ for the majority of UK offshore benthic habitat MPAs, including those in Welsh offshore waters¹⁹. These advice packages provide:

- Conservation objectives for the sites;
- JNCC's view of the site's condition, the conservation benefits it can provide and the conservation measures which, in JNCC's view, are required to ensure the site achieves its conservation objectives;
- Supplementary Advice on the Conservation Objectives where JNCC sets out the important ecological characteristics of the feature which need to be conserved, and includes more detailed advice and site-specific information on these; and
- Advice on operations which sets out advice on how human activities can impact the feature within the site and therefore achievement of the site's conservation objectives.

¹⁶ lle.gov.wales/apps/marineportal/

¹⁷ naturalresources.wales/guidance-and-advice/environmental-topics/wildlife-and-biodiversity/find-protected-areas-of-land-and-seas/conservation-advice-for-european-marine-sites/?lang=en, jncc.defra.gov.uk/pdf/SAS_Conservation_Objectives_and_Reg_18_Irish_Sea_Front.pdf and jncc.defra.gov.uk/PDF/CCSSAC_ConservationObjectives_AdviceonOperations.pdf

¹⁸ jncc.defra.gov.uk/page-6849

¹⁹ jncc.defra.gov.uk/page-6530

There is also a wide variety of other information produced to inform the management of sites, including guidance on specific activities and Natura 2000 standard data forms. Links to further information and guidance are set out in Annex 2.

4.4 Understanding the condition of sites and their features to inform management

Information on the condition of features, trends and factors affecting pressures (where they exist) at the site level is important for site management. There are significant amounts of data available, such as the Water Framework Directive transitional and coastal waters surveillance programme, the Cetacean Strandings Investigation Programme²⁰, the State of Natural Resources Report (SoNaRR) 2016²¹ and wider monitoring of the marine area. Sharing this information allows management authorities and others to:

- undertake assessments of plans and projects;
- prioritise resources;
- inform the development of management measures to improve the condition of features; and
- evaluate the effectiveness of management measures.

In January 2018 NRW published indicative feature-level site condition reports²² for all inshore SACs and SPAs with marine features. The reports concluded the current condition of inshore sites within the Welsh MPA network is variable and provide evidence of the relationship between some activities and feature condition. These reports indicated the network of MPAs is able to support significant populations of seabirds and marine mammals in favourable condition, as well as a variety of seabed species and habitats. The key findings from the reports are:

- 46% of all features in Wales were assessed as in favourable condition, with the majority assessed with high confidence.
- 54% of features in Wales were assessed as in unfavourable condition, with around half assessed with high confidence.
- All marine mammal features, including bottlenose dolphin, grey seal and otter, were assessed as being in favourable condition.
- Water quality issues, pollution, unregulated activities and invasive non-native species were identified as key pressures on feature condition.

4.5 Wider management

Wider management activities focus on action to understand and where necessary remove pressures which will help in improving the condition of the network. This can include management of unregulated activities, delivery of local management actions, targeted awareness-raising and the control and management of invasive non-native species. Actions can be carried out at the local, multi-site, national and international levels²³.

There are many examples of how activities are being managed in Wales to avoid impacts on MPA features, whilst allowing for access to and enjoyment of seas and wildlife. Many of these management activities are delivered by management authorities working collaboratively, according to the principles of the Wellbeing of Future Generations Act (2015), such as through Relevant Authority Groups.

²⁰ www.zsl.org/science/research/uk-cetacean-strandings-investigation-programme-csip

²¹ naturalresources.wales/evidence-and-data/research-and-reports/the-state-of-natural-resources-report-assessment-of-the-sustainable-management-of-natural-resources/?lang=en

²² naturalresources.wales/guidance-and-advice/environmental-topics/wildlife-and-biodiversity/find-protected-areas-of-land-and-seas/indicative-feature-condition-assessments-for-european-marine-sites-ems/?lang=en

²³ For example through the IMO International Convention for the Control and Management of Ships' Ballast Water and Sediment, which helps control the introduction of invasive non-native species: [www.imo.org/en/About/Conventions/ListOfConventions/Pages/International-Convention-for-the-Control-and-Management-of-Ships'-Ballast-Water-and-Sediments-\(BWM\).aspx](http://www.imo.org/en/About/Conventions/ListOfConventions/Pages/International-Convention-for-the-Control-and-Management-of-Ships'-Ballast-Water-and-Sediments-(BWM).aspx)

Examples of this type of management activity undertaken in Wales include:

- public education and general awareness raising of MPAs e.g. school visits, beach cleans and shore safaris;
- local engagement with stakeholders on plans and developments;
- zoning of activities to reduce impacts e.g. visitor moorings and bait digging codes of conduct;
- provision of signage, e.g. information boards and exclusion notices relating to marine protected areas;
- assessment of local pressures e.g. assessment of recreational boating;
- working with stakeholders to tackle local issues e.g. litter projects and projects targeted at specific features and locations; and
- monitoring compliance with codes of conduct.

NRW's MPA Condition Improvement Project

In 2016 NRW started work with partners on the MPA Condition Improvement Project (CIP). The project builds upon the marine outputs of the LIFE N2K Programme for Wales (2012 to 2015) which developed a strategic forward plan setting out the requirements for the management and restoration of the MPA network in Wales. The overarching purpose of the Programme was to enable Wales to make significant progress towards bringing habitats and species into favourable condition. It focused on inshore SACs and SPAs which are core components of the network of MPAs in Wales.

Five work areas have been identified focusing on activities which will deliver maximum impact on the condition of the network. The five work areas are:

- Access and Recreation – e.g. damage to habitats or disturbance of species;
- Water management and issues – e.g. coastal squeeze, flood and coastal erosion risk management;
- Pollution and waste – e.g. marine litter and diffuse water pollution;
- Marine fisheries – e.g. potting and netting activities; and
- Invasive species – e.g. marine non-native species.

Section 5

Improving the management and condition of the network of Marine Protected Areas in Wales

To improve the management and condition of the network of MPAs across Wales the MPA Management Steering Group will, on an annual basis, identify the key management actions in the form of a MPA Management Action Plan. The Plan provides a focus for management authorities on actions which can lead to further improvements in the management, and hence condition, of the network of MPAs in Wales.

The management actions will contribute to at least one of the five management principles set out in Section 3:

- MP1 – Strategic Planning
- MP2 – Regulation, development consenting and assessment processes
- MP3 – Management advice and guidance
- MP4 – Understanding the condition of sites and their features to inform management
- MP5 – Wider management

The MPA Management Steering Group will maintain close links between the MPA Network Action Plan and actions which are agreed and delivered at a local level. The local actions will be reviewed annually to consider whether the outcomes have any wider applicability across the network of MPAs in Wales.

The MPA Management Steering Group will provide advice on which management authority or authorities are best placed to deliver the management actions captured in the Action Plan. Depending on the management action, delivery may be taken forward individually or in collaboration with other management authorities. Some management authorities already choose to work in this way through Relevant Authority Groups, which is in keeping with the spirit of the Well-being of Future Generations (Wales) Act (2015).

Responsibility for the governance of the Framework and Action Plan lies with the MPA Management Steering Group. The MPA Management Steering Group is made up of representatives from the main management authorities in Wales who have responsibilities across the network of MPAs in Wales, and is therefore best placed to provide oversight and steer in the development, review and delivery of the Framework and Action Plan.

The MPA Network Management Action Plan will be reviewed, updated and prioritised²⁴ on an annual basis using information from a variety of sources including the MPA Condition Improvement Project, local site officer knowledge and information on feature condition. Action Plans and progress reports will be disseminated to a wider group of stakeholders through MPA Management Steering Group member's networks, the Wales Marine Advisory and Action Group and the Welsh Government's website. The Framework will be reviewed in full in alignment with the Marine and Coastal Access Act (2009) reporting cycle in 2023.

²⁴ Details of the prioritisation process are set out in Annex 2 of the Action Plan.

Annex 1

Lists of species and habitats protected at each Marine Protected Area in Wales

Special Area of Conservation	Marine Feature
Y Fenai a Bae Conwy / Menai Strait and Conwy Bay	Reefs
	Mudflats and sandflats not covered by seawater at low tide
	Sandbanks which are slightly covered by seawater all the time
	Large shallow inlets and bays
	Submerged or partially submerged sea caves
Dee Estuary / Aber Dyfrdwy	Atlantic salt meadows <i>Glauco-Puccinellietalia maritima</i>
	<i>Salicornia</i> and other annuals colonising mud and sand
	Mudflats and sandflats not covered by seawater at low tide
	Annual vegetation of drift lines
	Estuaries
	Sea lamprey <i>Petromyzon marinus</i>
	River lamprey <i>Lampetra fluviatilis</i>
Pen Llŷn a'r Sarnau / Llyn Peninsula and the Sarnau	Coastal lagoons
	Estuaries
	Large shallow inlets and bays
	Reefs
	Sandbanks which are slightly covered by seawater all the time

Special Area of Conservation	Marine Feature
(Continued)	Atlantic salt meadows <i>Glauco-Puccinellietalia maritima</i>
	Mudflats and sandflats not covered by seawater at low tide
	Submerged or partially submerged sea caves
	<i>Salicornia</i> and other annuals colonising mud and sand
	Grey seal <i>Halichoerus grypus</i>
	Otter <i>Lutra lutra</i>
	Bottlenose dolphin <i>Tursiops truncatus</i>
Carmarthen Bay and Estuaries / Bae Caerfyrddin ac Aberoedd	Atlantic salt meadows <i>Glauco-Puccinellietalia maritima</i>
	Estuaries
	<i>Salicornia</i> and other annuals colonising mud and sand
	Twaite shad <i>Alosa fallax</i>
	Large shallow inlets and bays
	Mudflats and sandflats not covered by seawater at low tide
	Sandbanks which are slightly covered by seawater all the time
	Sea lamprey <i>Petromyzon marinus</i>
	River lamprey <i>Lampetra fluviatilis</i>
Allis shad <i>Alosa alosa</i>	
Otter <i>Lutra lutra</i>	
Pembrokeshire Marine / Sir Benfro Forol	Reefs
	Estuaries
	Large shallow inlets and bays

Special Area of Conservation	Marine Feature
(Continued)	Atlantic salt meadows <i>Glauco-Puccinellietalia maritima</i>
	Coastal lagoons
	Mudflats and sandflats not covered by seawater at low tide
	Sandbanks which are slightly covered by seawater all the time
	Submerged or partially submerged sea caves
	Grey seal <i>Halichoerus grypus</i>
	Twaite shad <i>Alosa fallax</i>
	Allis shad <i>Alosa alosa</i>
	Sea lamprey <i>Petromyzon marinus</i>
	River lamprey <i>Lampetra fluviatilis</i>
	Shore dock <i>Rumex rupestris</i>
Otter <i>Lutra lutra</i>	
Cardigan Bay / Bae Ceredigion	Reefs
	Sandbanks which are slightly covered by seawater all the time
	Submerged or partially submerged sea caves
	Bottlenose dolphin <i>Tursiops truncatus</i>
	Grey seal <i>Halichoerus grypus</i>
Sea lamprey <i>Petromyzon marinus</i>	
Severn Estuary / Môr Hafren	Atlantic salt meadows <i>Glauco-Puccinellietalia maritima</i>
	Estuaries
	Mudflats and sandflats not covered by seawater at low tide

Special Area of Conservation	Marine Feature
(Continued)	Sandbanks which are slightly covered by seawater all the time
	Reefs
	Twaite shad <i>Alosa fallax</i>
	Sea lamprey <i>Petromyzon marinus</i>
	River lamprey <i>Lampetra fluviatilis</i>
Kenfig / Cynffig	Atlantic salt meadows <i>Glauco-Puccinellietalia maritimae</i>
Glannau Môn: Cors heli / Anglesey Coast: Saltmarsh	Atlantic salt meadows <i>Glauco-Puccinellietalia maritimae</i>
	<i>Salicornia</i> and other annuals colonising mud and sand
	Estuaries
	Mudflats and sandflats not covered by seawater at low tide
Bae Cemlyn / Cemlyn Bay	Coastal lagoons
Limestone Coast of South West Wales / Arfordir Calchfaen de Orllewin Cymru	Submerged or partially submerged sea caves

Site of Community Importance ²⁵	Marine Feature
North Anglesey Marine / Gogledd Môn Forol	Harbour porpoise <i>Phocoena phocoena</i>
West Wales Marine / Gorllewin Cymru Forol	Harbour porpoise <i>Phocoena phocoena</i>
Bristol Channel Approaches / Dynesfeydd Môr Hafren	Harbour porpoise <i>Phocoena phocoena</i>
Croker Carbonate Slabs	Submarine structures made by leaking gases

²⁵ For management purposes these are managed as if already designated.

Special Protection Area	Marine Feature
<p>The Dee Estuary</p>	<p>Northern Pintail <i>Anas acuta</i> Eurasian Teal <i>Anas crecca</i> Eurasian widgeon <i>Anas penelope</i> Sanderling <i>Calidris alba</i> Dunlin <i>Calidris alpina</i> Red Knot <i>Calidris canutus</i> Common oystercatcher <i>Haematopus ostralegus</i> Bar-tailed godwit <i>Limosa lapponica</i> Black-tailed godwit <i>Limosa limosa</i> Eurasian curlew <i>Numenius arquata</i> Great cormorant <i>Phalacrocorax carbo</i> Grey plover <i>Pluvialis squatarola</i> Common tern <i>Sterna hirundo</i> Little tern <i>Sterna albifrons</i> Sandwich tern <i>Sterna sandvichensis</i> Common Shelduck <i>Tadorna tadorna</i> Common redshank <i>Tringa totanus</i></p>
<p>Bae Caerfyrddin / Carmarthen Bay</p>	<p>Common scoter <i>Melanitta nigra</i></p>
<p>Burry Inlet</p>	<p>Northern Pintail <i>Anas acuta</i> Eurasian Teal <i>Anas crecca</i> Eurasian widgeon <i>Anas penelope</i> Dunlin <i>Calidris alpina</i> Red Knot <i>Calidris canutus</i> Common oystercatcher <i>Haematopus ostralegus</i> Eurasian curlew <i>Numenius arquata</i> Grey plover <i>Pluvialis squatarola</i> Common Shelduck <i>Tadorna tadorna</i> Common redshank <i>Tringa totanus</i> Black-tailed godwit <i>Limosa limosa</i></p>

Special Protection Area	Marine Feature
Liverpool Bay / Bae Lerpwl	Red-throated diver <i>Gavia stellata</i> Common scoter <i>Melanitta nigra</i> Little gull <i>Larus minutus</i> Common tern <i>Sterna hirundo</i> Little tern <i>Sterna albifrons</i>
Severn Estuary	Dunlin <i>Calidris alpina</i> Common shelduck <i>Tadorna tadorna</i> Common redshank <i>Tringa totanus</i> Northern Pintail <i>Anas acuta</i> Eurasian Teal <i>Anas crecca</i> Eurasian widgeon <i>Anas Penelope</i> Ring plover <i>Charadrius hiaticula</i> Common oystercatcher <i>Haematopus ostralegus</i> Eurasian curlew <i>Numenius arquata</i> Grey plover <i>Pluvialis squatarola</i>
Traeth Lafan / Lavan Sands, Conway Bay	Common oystercatcher <i>Haematopus ostralegus</i> Eurasian curlew <i>Numenius arquata</i> Great crested grebe <i>Podiceps cristatus</i>
Grassholm	Gannet <i>Morus Bassanus</i>
Skomer, Skokholm and the seas off Pembrokeshire / Sgomer, Sgogwm a Moroedd Benfro	Puffin <i>Fratercula arctica</i> Storm petrel <i>Hydrobates pelagicus</i> Lesser black-backed gull <i>Larus fuscus</i> Manx shearwater <i>Puffinus puffinus</i>
Glannau Aberdaron ac Ynys Enlli / Aberdaron Coast and Bardsey Island	Manx Shearwater <i>Puffinus puffinus</i>
Northern Cardigan Bay / Gogledd Bae Ceredigion	Red throated diver <i>Gavia stellata</i>

Special Protection Area	Marine Feature
Anglesey Terns / Morwenoliaid Ynys Môn	Common tern <i>Sterna hirundo</i> Arctic tern <i>Sterna paradisaea</i> Roseate tern <i>Sterna dougallii</i> Sandwich tern <i>Sterna sandvicensis</i>
Irish Sea Front	Manx shearwater <i>Puffinus puffinus</i>
Dyfi Estuary	Greenland white-fronted goose <i>Anser albifrons</i>

Ramsar sites	Marine Feature
The Dee Estuary	Curlew <i>Numenius arquata</i> Pintail <i>Anas acuta</i> Eurasian Teal <i>Anas crecca</i> Dunlin <i>Calidris alpina alpina</i> Red Knot <i>Calidris canutus</i> Oystercatcher <i>Haematopus ostralegus</i> Bar-tailed godwit <i>Limosa lapponica</i> Black-tailed godwit <i>Limosa limosa</i> Grey plover <i>Pluvialis squatarola</i> Common Shelduck <i>Tadorna tadorna</i> Common Redshank <i>Tringa totanus</i>
Burry Inlet	Northern Pintail <i>Anas acuta</i> Common Redshank <i>Tringa totanus</i> Oystercatcher <i>Haematopus ostralegus</i> Red Knot <i>Calidris canutus</i>
Severn Estuary	Common shelduck <i>Tadorna tadorna</i> Dunlin <i>Calidris alpina</i> Common redshank <i>Tringa totanus</i>

Ramsar sites	Marine Feature
(Continued)	Lesser black-backed gull <i>Larus fuscus</i> Ringed plover <i>Charadrius hiaticula</i> Eurasian Teal <i>Anas crecca</i> Northern Pintail <i>Anas acuta</i>
Cors Fochno and Dyfi	Common greenshank <i>Tringa nebularia</i>

Marine Conservation Zone	Marine Feature
Skomer / Sgomer	TBD

Site of Special Scientific Interest	Marine Feature
Aber Afon Conwy / Conwy Estuary	Estuaries
	Rockpools
	Soft piddock bored substrata
Aber Mawddach / Mawddach Estuary	Common redshank <i>Tringa totanus</i>
	Inter-tidal
	Salt-marsh
	Otter <i>Lutra lutra</i>
	Sheltered mud

Site of Special Scientific Interest	Marine Feature
Aber Taf / Taf Estuary	Salt-marsh
	Allis shad <i>Alosa alosa</i>
	Twaite shad <i>Alosa fallax</i>
Aberarth – Carreg Wylan	Grey seal <i>Halichoerus grypus</i>
	Bottlenose dolphin <i>Tursiops truncatus</i>
	Caves and overhangs
	Exposed rock
	Moderately exposed rock
	Rockpools
	Sand influenced biogenic reefs An amphipod <i>Pectenogammarus planicrurus</i>
Afon Dyfrdwy / River Dee	Salt-marsh
	River lamprey <i>Lampetra fluviatilis</i>
	European smelt <i>Osmerus eperlanus</i>
	Sea lamprey <i>Petromyzon marinus</i>
	Atlantic salmon <i>Salmo salar</i>
	Otter <i>Lutra lutra</i>
Afon Teifi	Inter-tidal
	Salt-marsh
	River lamprey <i>Lampetra fluviatilis</i>
	Sea lamprey <i>Petromyzon marinus</i>
	Atlantic salmon <i>Salmo salar</i>

Site of Special Scientific Interest	Marine Feature
(Continued)	Otter <i>Lutra lutra</i>
	Bottlenose dolphin <i>Tursiops truncatus</i>
Afon Tywi	Salt-marsh
	Allis shad <i>Alosa alosa</i>
	Twaite shad <i>Alosa fallax</i>
	Otter <i>Lutra lutra</i>
Allt Wen a Traeth Tanybwllch	Sand influenced biogenic reefs
	An amphipod <i>Pectenogammarus planicrurus</i>
Arfordir Abereiddi	Grey seal <i>Halichoerus grypus</i>
	Caves and overhangs
	Exposed rock
	Rockpools
	Silled saline lagoon
Arfordir Gogleddol Penmon	Caves and overhangs
	Moderately exposed rock
	Rockpools
	Soft piddock bored substrata
Arfordir Marros – Pentwyn / Marros – Pendine Coast	Exposed sand
	Soft piddock bored substrata
Arfordir Niwgwl – Aber bach / Newgale to Little Haven Coast	Caves and overhangs
	Rockpools
	Surge gullies
	Under-boulders

Site of Special Scientific Interest	Marine Feature
Arfordir Pen-bre / Pembrey Coast	Sanderling <i>Calidris alba</i>
	Common oystercatcher <i>Haematopus ostralegus</i>
	Salt-marsh
	Allis shad <i>Alosa alosa</i>
	Twaite shad <i>Alosa fallax</i>
	Exposed sand
	Moderately exposed sand
	Rockpools
Arfordir Penrhyn Angle / Angle Peninsula Coast	A red seaweed <i>Gigartina pistillata</i>
	Caves and overhangs
	Rockpools
	Soft piddock bored substrata
	Tide-swept algae
	Under-boulders
Arfordir Saundersfoot – Telpyn / Saundersfoot – Telpyn Coast	Exposed sand
	Rockpools
Beddmanarch – Cymyran	Common ringed plover <i>Charadrius hiaticula</i>
	Common greenshank <i>Tringa nebularia</i>
	Inter-tidal
	Salt-marsh
	Eel grass
	Muddy gravel
	Sheltered mud

Site of Special Scientific Interest	Marine Feature
(Continued)	Tide-swept algae
Blackpill, Swansea	Sanderling <i>Calidris alba</i>
	Common ringed plover <i>Charadrius hiaticula</i>
	Muddy gravel
Borth – Clarach	Moderately exposed rock
	Sand influenced biogenic reefs
Bracelet Bay	Sand influenced biogenic reefs
Broadwater	Salt-marsh
	Isolated saline lagoon
Burry Inlet and Loughor Estuary	Northern Pintail <i>Anas acuta</i>
	Northern Shoveler <i>Anas clypeata</i>
	Eurasian Teal <i>Anas crecca</i>
	Eurasian widgeon <i>Anas penelope</i>
	Ruddy turnstone <i>Arenaria interpres</i>
	Dunlin <i>Calidris alpina</i>
	Red Knot <i>Calidris canutus</i>
	Common oystercatcher <i>Haematopus ostralegus</i>
	Eurasian curlew <i>Numenius arquata</i>
	European golden plover <i>Pluvialis apricaria</i>
	Grey plover <i>Pluvialis squatarola</i>
	Common shelduck <i>Tadorna tadorna</i>
	Salt-marsh
Eel grass	

Site of Special Scientific Interest	Marine Feature
(Continued)	Mixed substrata
	Moderately exposed sand
	Rockpools
	Sheltered mud
	A bristleworm <i>Ophelia bicornis</i>
Castlemartin Cliffs and Dunes	A red seaweed <i>Gigartina pistillata</i>
	Exposed rock
	Moderately exposed rock
	Rockpools
	Soft piddock bored substrata
Caswell Bay	Moderately exposed rock
	Sand influenced biogenic reefs
Cemlyn Bay	Percolation saline lagoon
Coedydd Afon Menai	Chalk and very soft rock
Craig Ddu – Wharley Point Cliffs	Assemblage of RDB and/or Nationally Scarce vascular plants
	Coastal geomorphology of Wales
	Maritime cliff and associated ledges and crevices
Craigyfulfran & Clarach	Sand influenced biogenic reefs
Creigiau Aberarth – Morfa	Sand influenced biogenic reefs
Creigiau Cwm – Ceirw a Ffos-las (Morfa Bychan)	Sand influenced biogenic reefs
Creigiau Llansteffan – Llanstephan Cliffs	Coastal geomorphology of Wales
Creigiau Pen y graig	Sand influenced biogenic reefs

Site of Special Scientific Interest	Marine Feature
Creigiau Rhiwledyn / Little Ormes Head	Caves and overhangs
	Moderately exposed rock
	Rockpools
	Soft piddock bored substrata
	Under-boulders
Crymlyn Burrows	Salt-marsh
Cynffig / Kenfig	Rockpools
	Sand influenced biogenic reefs
	Soft piddock bored substrata
Dale and South Marloes Coast	A red seaweed <i>Gigartina pistillata</i>
	Grey seal <i>Halichoerus grypus</i>
	Caves and overhangs
	Chalk and very soft rock
	Exposed rock
	Moderately exposed rock
	Rockpools
De Porth Sain Ffraidd / St Bride's Bay South	Grey seal <i>Halichoerus grypus</i>
	Caves and overhangs
	Rockpools
	Tide-swept algae
	Under-boulders

Site of Special Scientific Interest	Marine Feature
Dee Estuary / Aber Afon Dyfrdwy	Northern Pintail <i>Anas acuta</i>
	Eurasian Teal <i>Anas crecca</i>
	Eurasian widgeon <i>Anas penelope</i>
	Dunlin <i>Calidris alpina</i>
	Red Knot <i>Calidris canutus</i>
	Common ringed plover <i>Charadrius hiaticula</i>
	Common oystercatcher <i>Haematopus ostralegus</i>
	Bar-tailed godwit <i>Limosa lapponica</i>
	Black-tailed godwit <i>Limosa limosa</i>
	Eurasian curlew <i>Numenius arquata</i>
	Great cormorant <i>Phalacrocorax carbo</i>
	Grey plover <i>Pluvialis squatarola</i>
	Great crested grebe <i>Podiceps cristatus</i>
	Common tern <i>Sterna hirundo</i>
	Sandwich tern <i>Sterna sandvicensis</i>
	Common shelduck <i>Tadorna tadorna</i>
	Common redshank <i>Tringa totanus</i>
	Salt-marsh
	River lamprey <i>Lampetra fluviatilis</i>
	European smelt <i>Osmerus eperlanus</i>
Sea lamprey <i>Petromyzon marinus</i>	
Estuaries	
Moderately exposed sand	

Site of Special Scientific Interest	Marine Feature
(Continued)	Rockpools
	Sand influenced biogenic reefs
	Soft piddock bored substrata
	A bristleworm <i>Ophelia bicornis</i>
	Thumbnail crab <i>Thia scutellata</i>
Dyfi	Eurasian widgeon <i>Anas penelope</i>
	Breeding bird assemblage on sand-dunes and saltmarshes
	Common redshank <i>Tringa totanus</i>
	Inter-tidal
	Salt-marsh
	Otter <i>Lutra lutra</i>
	Estuaries
	Moderately exposed sand
	Muddy gravel
Sheltered mud	
East Aberthaw Coast	Rockpools
	Under-boulders
	A flatworm <i>Convoluta roscoffensis</i>
Flat Holm	Sand influenced biogenic reefs
Freshwater East Cliffs to Skrinkle Haven	Caves and overhangs
	Rockpools
	Soft piddock bored substrata
	An amphipod <i>Pectenogammarus planicrurus</i>

Site of Special Scientific Interest	Marine Feature
Glanllynnau a Glannau Pen-ychain i Gricieth	Caves and overhangs
	Mixed substrata
	Rockpools
	Sand influenced biogenic reefs
	Soft piddock bored substrata
	Under-boulders
Glannau Aberdaron	Caves and overhangs
	Exposed rock
	Rockpools
Glannau Penmon – Biwmares	Caves and overhangs
	Mixed substrata
	Muddy gravel
	Soft piddock bored substrata
	Tide-swept algae
	Under-boulders
Glannau Porthaethwy	Caves and overhangs
	Mixed substrata
	Muddy gravel
	Rockpools
	Sheltered rock
	Tide-swept algae

Site of Special Scientific Interest	Marine Feature
Glannau Rhoscolyn	Inter-tidal
	Salt-marsh
	Eel grass
	Exposed rock
Glannau Tonfanau i Friog	Mixed substrata
	Rockpools
	Sand influenced biogenic reefs
Glannau Ynys Gybi / Holy Island Coast	Inter-tidal
	Caves and overhangs
	Rockpools
	Under-boulders
	A sponge <i>Stryphus ponderosus</i>
Glaslyn	Salt-marsh
Gower Coast: Rhossili to Port Eynon	Caves and overhangs
	Rockpools
	Soft piddock bored substrata
Grassholm / Ynys Gwales	Grey seal <i>Halichoerus grypus</i>
	Exposed rock
Gronant Dunes and Talacre Warren	Sanderling <i>Calidris alba</i>
	Great cormorant <i>Phalacrocorax carbo</i>
	Inter-tidal
	Salt-marsh
	Exposed sand

Site of Special Scientific Interest	Marine Feature
Gwydir Bay	Soft piddock bored substrata
Hook Wood	Salt-marsh
Horton, Eastern and Western Slade	Sand influenced biogenic reefs
Lydstep Head to Tenby Burrows	Caves and overhangs
	Soft piddock bored substrata
	Tide-swept algae
Merthyr Mawr	Salt-marsh
	Sand influenced biogenic reefs
Milford Haven Waterway	Eurasian Teal <i>Anas crecca</i>
	Eurasian widgeon <i>Anas penelope</i>
	Dunlin <i>Calidris alpina</i>
	Eurasian curlew <i>Numenius arquata</i>
	Little grebe <i>Tachybaptus ruficollis</i>
	Common shelduck <i>Tadorna tadorna</i>
	Salt-marsh
	European smelt <i>Osmerus eperlanus</i>
	Otter <i>Lutra lutra</i>
	Caves and overhangs
	Eel grass
	Mixed substrata
	Moderately exposed rock
Moderately exposed sand	
Muddy gravel	

Site of Special Scientific Interest	Marine Feature
(Continued)	Rockpools
	Sheltered mud
	Sheltered rock
	Silled saline lagoon
	Tide-swept algae
	Under-boulders
	Tentacled lagoon worm <i>Alkmaria romijni</i>
	An amphipod <i>Gammarus chevreuxi</i>
Monknash Coast	Sand influenced biogenic reefs
	Soft piddock bored substrata
Morfa Dinlle	Coastal geomorphology of Wales
Morfa Dyffryn	Salt-marsh
	Sand influenced biogenic reefs
Morfa Harlech	Northern Pintail <i>Anas acuta</i>
	Breeding bird assemblage on sand-dunes and saltmarshes
	Salt-marsh
	Otter <i>Lutra lutra</i>
	Exposed sand
	Moderately exposed sand
	Muddy gravel
Morfa Uchaf, Dyffryn Conwy	Salt-marsh
Mynydd Penarfynnydd	Rockpools

Site of Special Scientific Interest	Marine Feature
Mynydd Tir y Cwmwd a'r Glannau at Garreg yr Imbill	Caves and overhangs
	Muddy gravel
	Soft piddock bored substrata
	An amphipod <i>Pectenogammarus planicrurus</i>
Newborough Warren – Ynys Llanddwyn	Northern Pintail <i>Anas acuta</i>
	Salt-marsh
	Moderately exposed sand
	Rockpools
	A bristleworm <i>Ophelia bicornis</i>
Newport Cliffs	Caves and overhangs
	Rockpools
	Sand influenced biogenic reefs
Oxwich Bay	Salt-marsh
	Exposed sand
Pen y Gogarth / Great Ormes Head	Caves and overhangs
	Moderately exposed rock
	Rockpools
	Soft piddock bored substrata
	Under-boulders
Pennard Valley	Salt-marsh

Site of Special Scientific Interest	Marine Feature
Penarth Coast	Rockpools
	Sand influenced biogenic reefs
	Soft piddock bored substrata
	Tide-swept algae
Penrhynoedd Llangadwaladr	Exposed rock
	Rockpools
	Tide-swept algae
	Under-boulders
Porth Ceiriad, Porth Neigwl ac Ynysoedd Sant Tudwal	Caves and overhangs
	Exposed rock
	Rockpools
	Tide-swept algae
	A sponge <i>Stelletta grubi</i>
Porth Dinllaen i Borth Pistyll	Eel grass
	Moderately exposed sand
	Rockpools
Porth Towyn i Borth Wen	Caves and overhangs
	Moderately exposed rock
	Rockpools
Puffin Island – Ynys Seiriol	Soft piddock bored substrata
	Under-boulders
Pwll-Du Head and Bishopston Valley	Under-boulders

Site of Special Scientific Interest	Marine Feature
Ramsey / Ynys Dewi	Grey seal <i>Halichoerus grypus</i>
	Caves and overhangs
	Exposed rock
	Rockpools
	Surge gullies
	Tide-swept algae
	Under-boulders
	A sponge <i>Thymosia guernei</i>
Rhossili Down	Coastal geomorphology of Wales
Rhosneigr Reefs	Inter-tidal
	Caves and overhangs
	Rockpools
	Under-boulders
Severn Estuary	Northern Pintail <i>Anas acuta</i>
	Northern Shoveler <i>Anas clypeata</i>
	Eurasian Teal <i>Anas crecca</i>
	Eurasian widgeon <i>Anas penelope</i>
	Dunlin <i>Calidris alpina</i>
	Common ringed plover <i>Charadrius hiaticula</i>
	Black-tailed godwit <i>Limosa limosa</i>
	Eurasian curlew <i>Numenius arquata</i>
	European golden plover <i>Pluvialis apricaria</i>
	Grey plover <i>Pluvialis squatarola</i>

Site of Special Scientific Interest	Marine Feature
(Continued)	Common shelduck <i>Tadorna tadorna</i>
	Common redshank <i>Tringa totanus</i>
	Salt-marsh
	Allis shad <i>Alosa alosa</i>
	Twaite shad <i>Alosa fallax</i>
	European eel <i>Anguilla anguilla</i>
	River lamprey <i>Lampetra fluviatilis</i>
	Sea lamprey <i>Petromyzon marinus</i>
	Atlantic salmon <i>Salmo salar</i>
	Eel grass
	Estuaries
	Rockpools
	Sand influenced biogenic reefs
	Tide-swept algae
	Skokholm
An amphipod <i>Gammarus insensibilis</i>	
Skomer Island and Middleholm	A sea slug <i>Tenellia adspersa</i>
	Grey seal <i>Halichoerus grypus</i>
	Tide-swept algae
Skomer Island and Middleholm	Grey seal <i>Halichoerus grypus</i>
	Exposed rock
	Surge gullies

Site of Special Scientific Interest	Marine Feature
Southerndown Coast	Caves and overhangs
	Sand influenced biogenic reefs
St. David's Peninsula Coast	Grey seal <i>Halichoerus grypus</i>
	Exposed rock
	Rockpools
St. Margaret's Island	Caves and overhangs
	Soft piddock bored substrata
	Under-boulders
Stackpole Quay – Trewent Point	Caves and overhangs
	Moderately exposed rock
	Rockpools
	Soft piddock bored substrata
Stackpole	Otter <i>Lutra lutra</i>
	Caves and overhangs
	Rockpools
	Soft piddock bored substrata
Strumble Head – Llechdafad Cliffs	Caves and overhangs
	Exposed sand
	Surge gullies

Site of Special Scientific Interest	Marine Feature
Sully Island	Dunlin <i>Calidris alpina</i>
	Common ringed plover <i>Charadrius hiaticula</i>
	Grey plover <i>Pluvialis squatarola</i>
	Common redshank <i>Tringa totanus</i>
	Sand influenced biogenic reefs
Tenby Cliffs and St. Catherine's Island	Caves and overhangs
	Exposed sand
	Soft piddock bored substrata
The Offshore Islets of Pembrokeshire / Ynysoedd Glannau Penfro	Grey seal <i>Halichoerus grypus</i>
	Exposed rock
The Skerries	Rockpools
Tiroedd a Glannau Rhwng Cricieth ac Afon Glaslyn	Caves and overhangs
	Eel grass
	Moderately exposed sand
	Rockpools
	Sand influenced biogenic reefs
Traeth Lafan	Common oystercatcher <i>Haematopus ostralegus</i>
	Red-breasted merganser <i>Mergus serrator</i>
	Eurasian curlew <i>Numenius arquata</i>
	Common redshank <i>Tringa totanus</i>
	Eel grass
	Moderately exposed sand
	Rockpools

Site of Special Scientific Interest	Marine Feature
Traeth Llanon	Sand influenced biogenic reefs
Traeth Lligwy	Rockpools
Twyni Chwitffordd, Morfa Landimor a Bae Brychdwn / Whiteford Burrows etc	Common oystercatcher <i>Haematopus ostralegus</i>
	Salt-marsh
	Eel grass
	Exposed sand
	Rockpools
	Soft piddock bored substrata
	Tide-swept algae
Twyni Lacharn – Pentwyn / Laugharne – Pendine Burrows	European golden plover <i>Pluvialis apricaria</i>
	Otter <i>Lutra lutra</i>
	Exposed sand
	Moderately exposed sand
Ty Croes	Rockpools
	Surge gullies
Tywyn Aberffraw	Salt-marsh
	An amphipod <i>Gammarus chevreuxi</i>
Waterwynch Bay to Saundersfoot Harbour	Caves and overhangs
	Exposed sand
	Rockpools
	Tide-swept algae

Site of Special Scientific Interest	Marine Feature
Wig Bach a'r Glannau i Borth Alwm	Caves and overhangs
	Rockpools
	Surge gullies
Y Foryd	Eurasian widgeon <i>Anas penelope</i>
	Eel grass
Ynys Enlli	Caves and overhangs
	Exposed rock
	Rockpools
	Under-boulders
Ynys Feurig	Rockpools
	Under-boulders
Ynysoedd y Gwylanod – Gwylan Islands	Caves and overhangs
	Surge gullies

Annex 2

Further information and guidance for management authorities

Legislation and Conventions

Marine and Coastal Access Act 2009²⁶

EU Directive on the conservation of natural habitats and of wild fauna and flora²⁷

EU Directive on the conservation of wild birds²⁸

The Conservation of Habitats and Species Regulations 2017²⁹

The Conservation of Offshore Marine Habitats and Species Regulations 2017³⁰

Harbours Act (1964)³¹

The Convention on Wetlands of International Importance especially as Waterfowl Habitat 1971 (the Ramsar Convention)³²

Wildlife & Countryside Act 1981 (as amended)³³

Environment (Wales) Act 2016³⁴

The Wellbeing of Future Generations (Wales) Act 2015³⁵

Convention for the Protection of the Marine Environment of the North-East Atlantic (the OSPAR Convention)³⁶

Agreement on the Conservation of Small Cetaceans in the Baltic, North East Atlantic, Irish and North Seas (ASCOBANS)³⁷

Convention on the Conservation of European Wildlife and Natural Habitats (the Bern Convention)³⁸

Convention on the Conservation of Migratory Species of Wild Animals (the Bonn Convention)³⁹

²⁶ www.legislation.gov.uk/ukpga/2009/23/pdfs/ukpga_20090023_en.pdf

²⁷ eur-lex.europa.eu/legal-content/EN/TXT/PDF/?uri=CELEX:31992L0043&from=EN

²⁸ eur-lex.europa.eu/legal-content/EN/TXT/PDF/?uri=CELEX:32009L0147&from=EN

²⁹ www.legislation.gov.uk/uksi/2017/1012/contents/made

³⁰ www.legislation.gov.uk/uksi/2017/1013/contents/made

³¹ www.legislation.gov.uk/ukpga/1964/40/contents

³² portal.unesco.org/en/ev.php-URL_ID=15398&URL_DO=DO_TOPIC&URL_SECTION=201.html

³³ www.legislation.gov.uk/ukpga/1981/69

³⁴ www.legislation.gov.uk/anaw/2016/3/contents/enacted

³⁵ www.legislation.gov.uk/anaw/2015/2/contents/enacted

³⁶ www.ospar.org/convention

³⁷ www.ascobans.org/en/documents/agreement-text

³⁸ www.coe.int/en/web/conventions/full-list/-/conventions/treaty/104

³⁹ www.cms.int/en/convention-text

Guidance on interpretation of Articles 6.3 and 6.4 of the 'Habitats Directive'

Assessment of plans and projects significantly affecting Natura 2000 sites: Methodological guidance on the provisions of Article 6(3) and (4) of the Habitats Directive 92/43/EEC⁴⁰

Guidance document on Article 6(4) of the 'Habitats Directive' 92/43/EEC: clarification of the concepts of: alternative solutions, imperative reasons of overriding public interest, compensatory measures, overall coherence, opinion of the commission⁴¹

Conservation advice

Conservation Advice Packages provided under Regulation 37 of the Conservation of Habitats and Species Regulations 2017⁴²

Conservation Advice Packages provided under Regulation 21 of the Offshore Marine Habitats and Species Regulations 2017:

Croker Carbonate Slabs SCI conservation advice⁴³

Irish Sea Front SPA draft conservation advice⁴⁴

Further information on offshore conservation advice⁴⁵

Draft Conservation Objectives for Harbour Porpoise candidate Special Areas of Conservation:

naturalresources.wales/media/681291/n-anglesey-draft-objectives-advice.pdf⁴⁶

naturalresources.wales/media/681439/w-wales-marine-objectives-advice.pdf⁴⁷

naturalresources.wales/media/679449/bristolchannelapproachesconservationobjectivesandadviceonactivities.pdf⁴⁸

Site information

Links to SAC information and standard data forms⁴⁹

Links to SPA information and standard data forms⁵⁰

Link to site information centres for offshore MPAs⁵¹

⁴⁰ ec.europa.eu/environment/nature/natura2000/management/docs/art6/natura_2000_assess_en.pdf

⁴¹ ec.europa.eu/environment/nature/natura2000/management/docs/art6/new_guidance_art6_4_en.pdf

⁴² naturalresources.wales/guidance-and-advice/environmental-topics/wildlife-and-biodiversity/find-protected-areas-of-land-and-seas/conservation-advice-for-european-marine-sites/?lang=en

⁴³ jncc.defra.gov.uk/page-6530

⁴⁴ jncc.defra.gov.uk/page-4565

⁴⁵ jncc.defra.gov.uk/page-6849

⁴⁶ naturalresources.wales/media/681291/n-anglesey-draft-objectives-advice.pdf

⁴⁷ naturalresources.wales/media/681439/w-wales-marine-objectives-advice.pdf

⁴⁸ naturalresources.wales/media/679449/bristolchannelapproachesconservationobjectivesandadviceonactivities.pdf

⁴⁹ jncc.defra.gov.uk/ProtectedSites/SACselection/SAC_list.asp?Country=W

⁵⁰ jncc.defra.gov.uk/page-1403

⁵¹ jncc.defra.gov.uk/page-6895

Anglesey Coast: Saltmarsh SAC Core Management Plan⁵²

Cardigan Bay SAC Management Scheme⁵³

Carmarthen Bay and Estuaries Site Management Scheme⁵⁴

Cemlyn Bay SAC Core Management Plan⁵⁵

Dee Estuary Site Improvement Plan⁵⁶

Kenfig SAC Core Management Plan⁵⁷

Limestone Coast of South West Wales SAC Core Management Plan⁵⁸

Pembrokeshire Marine SAC Management Plan and Action Plan⁵⁹

Pen Llŷn a'r Sarnau SAC Management Plan and Action Plan⁶⁰

Severn Estuary Relevant Authority Action Plans⁶¹

Reports

2014 Report to the National Assembly for Wales on Marine Protected Areas in Wales published under Section 124 of the Marine and Coastal Access Act (2009)⁶²

Charting Progress 2: The State of UK Seas⁶³

Monitoring

2018 Indicative feature level site conditions reports for SACs and SPAs produced by Natural Resources Wales⁶⁴

⁵² www.naturalresources.wales/media/670652/Abermenai%20to%20Aberffraw%20Dunes%20WES32%20plan.pdf

⁵³ www.cardiganbaysac.org.uk/?page_id=18

⁵⁴ english.cbeems.org/wp-content/uploads/2011/05/CBE-EMS-MS_wkg-draft-Jan2013_en.pdf

⁵⁵ naturalresources.wales/media/671214/Cemlyn%20WES32%20plan%20English.pdf

⁵⁶ publications.naturalengland.org.uk/publication/6579320399069184

⁵⁷ www.naturalresources.wales/media/672610/Kenfig%20SAC%20management%20plan%2021.4.08%20English.pdf

⁵⁸ www.naturalresources.wales/media/672656/Limestone%20Coast%20of%20South%20West%20Wales%20English.pdf

⁵⁹ www.pembrokeshiremarinesac.org.uk/english/manage/man_c.htm

⁶⁰ www.penllynarsarnau.co.uk/download.aspx?file=documents\Management_Plan_English.pdf

⁶¹ www.asera.org.uk/management-scheme/action-plans/

⁶² gov.wales/docs/drah/publications/150518-marine-protected-areas-report-to-national-assembly.pdf

⁶³ webarchive.nationalarchives.gov.uk/20141203170558/http://chartingprogress.defra.gov.uk/

⁶⁴ naturalresources.wales/guidance-and-advice/environmental-topics/wildlife-and-biodiversity/find-protected-areas-of-land-and-seas/indicative-feature-condition-assessments-for-european-marine-sites-ems/?lang=en

General guidance

NRW monthly funding update leaflet for stakeholders⁶⁵

Wales Marine Planning Portal⁶⁶

Guidance for the development and management of the OSPAR network⁶⁷

Marine Invasive Non-native Species Priority Monitoring and Surveillance List for Wales⁶⁸

Guidance to Site of Special Scientific Interest (SSSI) land owners and occupiers⁶⁹

British Marine Aggregates Producers Association & Crown Estate Good Practice guidance on dredging of aggregates⁷⁰

⁶⁵ naturalresources.wales/about-us/funding/?lang=en

⁶⁶ lle.gov.wales/apps/marineportal/

⁶⁷ www.ospar.org/work-areas/bdc/marine-protected-areas/guidance-for-the-development-and-management-of-the-ospar-network

⁶⁸ gov.wales/docs/drah/publications/180122-marine-invasive-non-native-species-priority-list-monitoring-surveillance-en.pdf

⁶⁹ naturalresources.wales/guidance-and-advice/environmental-topics/wildlife-and-biodiversity/find-protected-areas-of-land-and-seas/guidance-to-site-of-special-scientific-interest-sssi-land-owners-and-occupiers/?lang=en

⁷⁰ www.bmapa.org/documents/BMAPA_TCE_Good_Practice_Guidance_04.2017.pdf

Annex 3

Management Authorities in Wales⁷¹

Type of Management Authority	Statutory Responsibilities	Relevant Legislation and Conventions
<p>Local Authorities:</p> <p>Monmouthshire County Council Newport City Council Cardiff County Council Vale of Glamorgan County Council Bridgend County Borough Council City and County of Swansea Carmarthenshire County Council Pembrokeshire County Council Ceredigion County Council Powys County Council Gwynedd County Council Anglesey County Council Conwy County Borough Council Denbighshire County Council Flintshire County Council</p>	<ol style="list-style-type: none"> 1. Landowner (some areas of foreshore). 2. Management of (non-permissible) development (down to the Low Water Mark). 3. Management of recreation activities (within their area of geographical and organisational responsibility). 4. Planning authority (interface between marine and terrestrial). 5. Provision of coastal defence and strategic planning. 6. Provision and management of public access (coastal paths). 7. Beach management and maintenance. 8. Waste management. 9. Make authorisations and enforcement decisions in line with the Welsh National Marine Plan. 	<p>Conservation of Habitats and Species Regulations (2017)</p> <p>Marine and Coastal Access Act (2009)</p> <p>The Wellbeing of Future Generations Act (2015)</p> <p>Environment (Wales) Act (2016)</p> <p>Planning (Wales) Act (2015)</p>

⁷¹ Please note that this is not a comprehensive list of management authorities with statutory responsibilities to manage the MPA network. Organisations should check against the relevant sections of The Conservation of Habitats and Species Regulations 2017 for more detailed information.

Type of Management Authority	Statutory Responsibilities	Relevant Legislation and Conventions
<p>National Park Authorities:</p> <p>Pembrokeshire Coast National Park Authority Snowdonia National Park Authority</p>	<ol style="list-style-type: none"> 1. Management of recreation activities (within area of responsibility). 2. Planning authority (interface between marine and terrestrial). 3. Make authorisations and enforcement decisions in line with the Welsh National Marine Plan. 	<p>Conservation of Habitats and Species Regulations (2017)</p> <p>Environment Act (1995)</p> <p>Marine and Coastal Access Act (2009)</p> <p>The Wellbeing of Future Generations Act (2015)</p> <p>Environment (Wales) Act (2016)</p>
<p>Port and Harbour Authorities:</p> <p>Gloucester Harbour Trustees Newport Harbour Commissioners ABP Newport ABP Cardiff Saundersfoot Harbour Commissioners Milford Haven Port Authority Port of Mostyn Ltd.</p>	<ol style="list-style-type: none"> 1. A general duty to exercise their functions with regard to nature conservation and other related environmental considerations. 2. An obligation, where a Special Protection Area for Birds or a Special Area of Conservation has been designated under the Wild Birds or Habitats Directives, to have regard to the requirements of the Habitats Directive so far as they may be affected by the exercise of those functions. 3. Preparation and implementation of harbour waste management plans. 4. Dredging and maintenance of navigational channels. 5. Manage access restrictions, speeds, and general activities within Harbour Authority's area of jurisdiction. 	<p>Conservation of Habitats and Species Regulations (2017)</p> <p>Marine and Coastal Access Act (2009)</p> <p>Harbours Act (1964)</p> <p>Environment (Wales) Act (2016)</p>

Type of Management Authority	Statutory Responsibilities	Relevant Legislation and Conventions
<p>Water and Sewerage Undertakers:</p> <p>Dŵr Cymru Welsh Water</p>	<p>In exercising its functions, water and sewerage undertakers must, for example:</p> <ol style="list-style-type: none"> 1. Have regard to the Habitats and Birds Directives. 2. Try to further, or at least not hinder, the conservation objectives of MCZs. 3. Maintain and enhance biodiversity and promote ecosystem resilience. 4. Further the conservation and enhancement of flora, fauna or geological or physiological features of SSSIs. 	<p>Conservation of Habitats and Species Regulations (2017)</p> <p>Marine and Coastal Access Act (2009)</p> <p>Environment (Wales) Act (2016)</p> <p>Water Industry Act (1991)</p> <p>Wildlife and Countryside Act (1981)</p>
<p>National Government:</p> <p>The Welsh Government</p> <p>UK Government – Department for Business, Energy & Industrial Strategy</p> <p>UK Government – Ministry of Defence</p> <p>UK Government – Department for Transport</p>	<p>The Welsh Government</p> <ol style="list-style-type: none"> 1. Overall responsibility for Wales’ compliance with EU and international obligations towards MPAs in the Welsh inshore region (0-12 nautical miles). 2. Designation of MPAs (excluding SSSIs). 3. Provides the overall MPA management policy framework, which is to secure effective management of MPAs in Wales that ultimately improves condition of our MPAs by assisting with the delivery of MPA management actions, safeguarding marine biodiversity, the wider ecosystem and the socio-economic benefits for Wales. 4. Management and regulation of sea fisheries in Welsh waters (inshore and offshore), in conjunction with the European Commission under the Common Fisheries Policy. 5. Powers to make orders to control activities to protect MPAs (including fisheries and recreation). 	<p>EC Directive on the conservation of natural habitats and of wild fauna and flora</p> <p>EC Directive on the conservation of wild birds</p> <p>EC Marine Strategy Framework Directive</p> <p>Conservation of Habitats and Species Regulations (2017)</p> <p>Marine and Coastal Access Act (2009)</p>

Type of Management Authority	Statutory Responsibilities	Relevant Legislation and Conventions
(Continued)	<p>6. Marine plan authority (development of marine plan) to manage marine activities in a sustainable way, taking into account economic, social and environmental priorities.</p> <p>7. The achievement of the Good Environmental Status characteristics and targets under the Marine Strategy Framework Directive in Welsh waters.</p> <p>8. Make authorisations and enforcement decisions in line with the Welsh National Marine Plan.</p> <p>Department for Business, Energy & Industrial Strategy (UK Government Department):</p> <p>1. Regulator of the licensing of exploration and development of offshore oil and gas resources (via the Oil and Gas Authority) and Nationally Significant Infrastructure Projects (NSIPs), including major marine renewable energy schemes.</p> <p>Ministry of Defence and Department for Transport (UK Government Departments):</p> <p>1. A duty under the Habitats and Birds Directives to assess the impact of plans or projects that may have a significant effect on SACs and/or SPAS, either alone or in combination with other plans or projects, and to secure the integrity of the SAC/SPA if the plan or project proceeds.</p>	<p>The Wellbeing of Future Generations Act (2015) (Welsh Government)</p> <p>Environment (Wales) Act (2016) (Welsh Government)</p> <p>Convention for the Protection of the Marine Environment of the North-East Atlantic (the OSPAR Convention)</p> <p>Agreement on the Conservation of Small Cetaceans in the Baltic, North East Atlantic, Irish and North Seas (ASCOBANS)</p> <p>Convention on the Conservation of European Wildlife and Natural Habitats (the Bern Convention)</p> <p>Convention on the Conservation of Migratory Species of Wild Animals (the Bonn Convention)</p> <p>Wildlife and Countryside Act (1981)</p>

Type of Management Authority	Statutory Responsibilities	Relevant Legislation and Conventions
<p>Statutory Nature Conservation Bodies:</p> <p>Natural Resources Wales</p> <p>Joint Nature Conservation Committee</p>	<p>Natural Resources Wales</p> <ol style="list-style-type: none"> 1. Statutory nature conservation advisor to the Welsh Government for the Welsh inshore region (0-12 nautical miles). 2. Development of advice on conservation objectives and operations/ activities (EMS and MCZs). 3. Regulator of activities that require a marine licence (delegated from the Welsh Government). 4. Management of migratory fisheries out to 6 nautical miles. 5. Management of Regulating Orders for cockles in the Burry Inlet and Dee Estuary. 6. Under the Water Framework Directive, the competent authority for estuarine and coastal waters to 1 nautical mile for ecological status and to 12 nautical miles for chemical status. 7. Environment Permitting Regulations activities e.g. radioactive materials/ship breaking in the Welsh inshore region (0-12 nautical miles) and regulating land based discharges and pollution incidents out to 3 nautical miles. 8. Management of flood risk, including Shoreline Management Planning and provision/maintenance of some sea defences. 9. Range of environmental monitoring and reporting functions, including the condition of MPAs and their features. 10. Preparation of Area Statements to support the sustainable management of natural resources, including a Marine Area Statement. 11. Make authorisations and enforcement decisions in line with the Welsh National Marine Plan. 	<p>EC Directive on the conservation of natural habitats and of wild fauna and flora</p> <p>EC Directive on the conservation of wild birds</p> <p>Conservation of Habitats and Species Regulations (2017)</p> <p>Marine and Coastal Access Act (2009)</p> <p>The Wellbeing of Future Generations Act (2015) (NRW)</p> <p>Wildlife and Countryside Act (1981)</p> <p>The Water Environment (Water Framework Directive)</p> <p>Conservation of Offshore Habitats (England and Wales) (Amendment) Species Regulations (2017)</p> <p>The Environmental Permitting (England and Wales) Regulations (2016)</p>

Type of Management Authority	Statutory Responsibilities	Relevant Legislation and Conventions
(Continued)	<p>Joint Nature Conservation Committee:</p> <ol style="list-style-type: none"> 1. Statutory nature conservation advisor to UK governments for the offshore marine area (beyond 12 nautical miles); carries out a number of similar functions to those exercised by NRW in relation to Wales and Welsh territorial waters, including the writing of conservation objectives and advice on operations for offshore MPAs and undertaking monitoring of these sites. JNCC also has a UK remit, leading on the provision of scientific advice to Government on the UK MPA network, as well as advising the UK delegation at OSPAR MPA working group meetings on methods of assessment for ecological coherence and management effectiveness. 	
<p>General Lighthouse Authorities: Trinity House</p>	<ol style="list-style-type: none"> 1. The General LH Authority for England, Wales and the Channel Isles, responsible for providing Aids to Navigation (AtoN). 2. Responsible for discharge of Government's obligations under the Safety of Life at Sea Convention 1974 (Chapter V, Regulation 14). 3. To mark wrecks and other dangers to navigation when required, and to remove wrecks if so directed by the Secretary of States Representative for Maritime Salvage and Intervention. 4. Consultee on 3rd party AtoN matters in respect of marine activities which require a marine licence. 5. Examination of applications for development consent for certain nationally significant infrastructure projects such as offshore wind farms. 6. A general duty to exercise their functions so as to secure compliance with the requirements of the Habitats Directive. 	<p>Merchant Shipping Act (1995) Wreck Removal Convention Act (2011) EC Directive on the conservation of natural habitats and of wild fauna and flora Environment (Wales) Act (2016) Planning Act (2008) Conservation of Habitats and Species Regulations (2017)</p>